

Team Motivation FMGE Coaching Academy

Mock Test – 2

- Most accurate measurement of extracellular fluid volume (ECF) can be done by using
 - Sucrose
 - Mannitol
 - Inulin
 - Aminopyrine
- True about thrombosthenin is
 - Coagulative protein
 - Contractile protein
 - Thrombus promoting protein
 - Protein for platelet production
- Gap junctions are seen in all except
 - Cardiac muscle
 - Retina
 - Visceral smooth muscle
 - Multi-unit smooth muscle
- ANP increases Na^+ excretion by which of the following mechanisms
 - Contracting afferent arterioles
 - Decreasing GFR
 - Decreasing sodium reabsorption by the inner medullary collecting duct
 - Increasing sodium reabsorption by the proximal tubules
- Blood pressure is defined as the product of
 - Systolic pressure x pulse
 - Diastolic pressure x pulse rate
 - pulse pressure x pulse rate
 - Cardiac output x peripheral resistance
- ECG in hyperkalemia classically shows
 - Increase QRS duration
 - Shortened PR interval
 - Prominent U waves
 - Increased R wave amplitude
- During the cardiac cycle, the opening of the aortic valve takes place at the
 - End of isovolumetric contraction
 - Beginning of systole
 - End of diastole
 - End of diastasis
- The alveolar ventilation in an individual with tidal volume 600 ml, dead space 150 ml and respiratory rate 15/min is
 - 2.5 lit/min
 - 4.0 lit/min
 - 9 lit/min
 - 6.75 lit/min
- From base to apex of the lung during standing all of the following decrease except
 - Pulmonary blood flow
 - Ventilation per unit volume
 - Ventilation/ perfusion ratio
 - Intrapleural pressure
- Broca's area is concerned with
 - Word formation
 - Comprehension
 - Repetition
 - Reading
- Sleep spindles appear in
 - Stage 1 of NREM
 - Stage 2 of NREM
 - Stage 3 of NREM
 - REM sleep
- The maintenance of posture in a normal adult human being depends upon
 - Integrity of reflex arc
 - Muscle power
 - Type of muscle fibres
 - Joint movements in physiological range
- In human being, the least useful physiological response to low environmental temperature is
 - Shivering
 - Piloerection
 - Vasoconstriction
 - Release of thyroxine
- PR interval in the ECG corresponds to
 - Time taken between onset of atrial contraction and onset of ventricular contraction
 - Time delay in the AV node
 - SA node conduction time
 - Ventricular depolarization
- Salivation by dog seen when food is given along with ringing of bell is
 - Conditioned reflex
 - Reinforcement
 - Innate reflex
 - Habituation

Team Motivation FMGE Coaching Academy

Mock Test - 2

16. Which of the following conditions is likely to cause a shift of the oxygen-haemoglobin dissociation curve to the right
 - a. Hypothermia
 - b. Exercise
 - c. Carbon monoxide poisoning
 - d. Transfusion with blanked blood
17. Several hormones regulate the tubular reabsorption of water and electrolytes at different sites in the nephron. Which of the following combination is correct
 - a. Angiotensin in distal tubule
 - b. Aldosterone in collecting ducts
 - c. ADH in proximal tubule
 - d. ANP in loop of Henle
18. In a demographic cycle late expanding phase corresponds to
 - a. First
 - b. Second
 - c. Third
 - d. Fourth
19. Emergency Contraceptive used after 5 days of unprotected sex
 - a. Levonorgestrel 0.75 mg
 - b. IUD
 - c. High dose estrogen
 - d. Tube ligation
20. Birth & death need to be registered within
 - a. 4 days
 - b. 7 & 14 days
 - c. 14 & 7 days
 - d. 21 days
21. In 2013, IMR of India per 1000 live birth is
 - a. 40
 - b. 43
 - c. 54
 - d. 64
22. Diagnosis of TB according to DOTS
 - a. 1 out of 2 samples positive
 - b. 2 out of 2 samples positive
 - c. 1 out of 3 samples positive
 - d. 2 out of 3 samples positive
23. Least common cause of Neonatal mortality in India
 - a. Prematurity
 - b. LBW
 - c. Birth asphyxia
 - d. Congenital disease
24. Toxin responsible for endemic ascites
 - a. BOAA
 - b. Sanguinarine
 - c. Pyrrolizidine
 - d. Ergots
25. Anti-tuberculosis day is
 - a. 31 May
 - b. 15 May
 - c. 25 May
 - d. 24 March
26. Extra calories required during pregnancy is
 - a. 150 kcal/day
 - b. 300 kcal/day
 - c. 500 kcal/day
 - d. 350 kcal/day
27. MC cause of MMR in India
 - a. Sepsis
 - b. Hemorrhage
 - c. Obstructed labour
 - d. Anemia
28. In IMNCI, target group
 - a. Up to 1 year
 - b. Up to 5 year
 - c. Up to 10 year
 - d. Up to 19 year
29. Vitamin A deficiency is considered a public health problem if prevalence of Bitot's spot is
 - a. More than 1.0 %
 - b. More than 0.5 %
 - c. More than 1 %
 - d. More than 5 %
30. Screening of children for 4Ds, Defects at birth, Deficiency, Diseases & Developmental delay is provided under
 - a. JananiShishuSurakshaKaryakram (JSSK)
 - b. RashtriyaBalSwasthyaKaryakram (RBSK)
 - c. NavjatShishuSurakshaKaryakram (NSSK)
 - d. Facility Based Newborn Care (FBNC)
31. Level of Iodized salt at production and consumption level should be
 - a. 15 & 5 ppm
 - b. 30 & 15 ppm
 - c. 30 & 20 ppm
 - d. 30 & 10 ppm
32. Analysis of measuring output in nonmonetary
 - a. Network

Team Motivation FMGE Coaching Academy

Mock Test – 2

- b. Cost-benefit
c. Cost-effective
d. Cost-utility analysis
33. Antiretroviral drug provided free of cost by NACO for PPTCT.
a. Zidovudine
b. Lamivudine
c. Nevirapine
d. All
34. Ultimate desired state towards which objectives and resources are directed is called
a. Goal
b. Objective
c. Mission
d. Target
35. Vitamin deficient in breast milk is
a. Vitamin K
b. Vitamin D
c. Vitamin C
d. Vitamin A
36. Ujjwala scheme is for prevention of
a. Child labour
b. Child abuse
c. Child trafficking
d. Child marriage
37. No of bed at CHC level
a. 1-2
b. 4-6
c. 15
d. 30
38. The topic for World Health Day -2015 is
a. Ageing & Health
b. High Blood Pressure
c. Preventing vector-borne diseases "Small bite, big threat"
d. Food Safety under the slogan "From farm to plate, make food safe."
39. Number of training centers under NPCB
a. 20
b. 200
c. 2000
d. 20000
40. Prevalence of iodine deficiency in a community is best assessed by
a. Neonatal hypothyroidism
b. Hypothyroidism in male population
c. Hypothyroidism in female population
d. Size of goitrous lesion
41. Essential health care made universally accessible to individuals and acceptable to them is called which type of health care
a. Essential
b. Comprehensive
c. Basic
d. Primary
42. Which of the following is not a part of duties of anganwadi worker
a. Immunization
b. Supplementary nutrition
c. Health check-up
d. Conducting deliveries
43. Not included in Primary health care
a. Equitable distribution
b. Intersectoral coordination
c. Appropriate technology
d. Treatment by doctors
44. How many Millennium Development Goals are directly related to health?
a. 2
b. 3
c. 4
d. 5
45. In UNICEF's GOBI -O stands for
a. Oral contraception
b. Occupational hazard
c. Obesity
d. Oral Rehydration Therapy
46. Bagassosis is caused by inhalation of
a. Sugarcane
b. Coal
c. Cotton
d. Silica
47. Under ICDS calorie supplement for pregnant women is
a. 300 calories
b. 500 calories
c. 600 calories
d. 200 calories
48. Most cardiostable agents include
a. Etomidate Vecuronium Isoflurane
b. Etomidate Pancuronium Halothane
c. Ketamine Vecuronium Desflurane
d. Thiopentone Vecuronium Halothane
49. An infant is undergoing circumcision in GA. The best anaesthetic circuit for controlled ventilation in this case is
a. Mapleson A
b. Mapleson C

Team Motivation FMGE Coaching Academy

Mock Test – 2

- c. Mapleson D
d. Mapleson F
50. A 30 yr old patient undergone a mitral valve replacement, on oral warfarin presently, comes for hernia surgery. Patient is asked to stop warfarin
- 1 day prior
 - 4 days prior
 - 7 days prior
 - 10 days prior
51. All of the following release histamine except
- Thiopentone
 - Ketamine
 - d-tubocurarine
 - Atracurium
52. Most Effective way to prevent post spinal headache
- Pre loading with crystalloids
 - Pain relief with caffeine
 - Less volume of drug used
 - Smaller gauge spinal needle
53. 1.Erethism is seen in poisoning by:
- Arsenic
 - copper
 - Lead
 - Mercury.
54. Cheiloscopy is the study of:
- Palatal prints
 - Foot prints
 - Pores
 - Lip prints
55. Perforation of stomach is common after ingestion of:
- Sulfuric acid
 - Nitric acid
 - Hydrochloric acid
 - all
56. All are features of strychnine poisoning:
- The convulsions are most marked in anti-gravity muscles.
 - All the muscles of the body are affected at a time.
 - Muscles are not completely relaxed in between the fits.
 - Consciousness is not lost & mind remains clear till death.
57. Dry drowning is:
- Drowning in shallow water
 - Drowning of a dehydrated body
 - Drowning where death is due to laryngeal spasm
 - Sea water drowning.
58. In a typical hanging, the knot of ligature is placed:
- Below chin in midline.
 - At the angle of mandible either side
 - Over the mastoid bone either side
 - At the nape of the neck on the back.
59. All are true about "Filigree burns" except:
- Seen in lightning injury
 - Resembles branches of a tree
 - Markings are seen along the paths of electric current.
 - It corresponds with the vascular channels.
60. Dying deposition is more important than dying declaration because it is:
- made before a magistrate.
 - oath is taken
 - accused is present
 - cross examination is allowed
61. Death sentence can be awarded by:
- session judge
 - chief metropolitan magistrate
 - first class magistrate.
 - second class magistrate
62. True about skull bone of female in comparision to male:
- Glabella is more prominent.
 - Muscular impressions are more prominent.
 - Orbits are rounded.
 - Frontal eminence is more prominent.
63. Herpes Zoster is mostly seen in:
- Cervical Region
 - Thoracic Region
 - Lumbar Region
 - None of the above
64. Which is not a photosensitive disease:-
- Porphyria
 - SLE
 - DLE
 - Lichen Plannus
65. Tuberculoid Leprosy shows:-
- Non Caseating granuloma in nerves
 - Sub epidermal free zone
 - Baccili in skin

Team Motivation FMGE Coaching Academy

Mock Test – 2

- d. All
66. Tuberculosis verrucosa Cutis is a form of :-
- Tuberculoid
 - Primary tuberculosis
 - Primary tuberculosis with good resistance
 - Primary tuberculosis with low resistance
67. Honey coloured crusts are a feature of:-
- Impetigo
 - Cutaneous Diphtheria
 - Herpes Zoster
 - Measles
68. The Development of somite is from:
- Paraxial mesoderm
 - Intermediate mesoderm
 - Somatic layer of lateral plate mesoderm
 - Visceral layer of lateral plate mesoderm
69. The visceral peritoneum is lined by:
- Simple squamous
 - Simple cuboidal
 - Simple columnar
 - Stratified squamous
70. The joint between diaphysis and epiphysis of a long bone is:
- Fibrous joint
 - Symphysis
 - Synchondrosis
 - Synovial joint
71. The muscle attached to the lesser tubercle of humerus:
- Subscapularis
 - Supraspinatus
 - Infraspinatus
 - Teres minor
72. The largest branch of the brachial plexus is:
- Median nerve
 - Radial nerve
 - Ulnar nerve
 - Musculo-cutaneous nerve
73. The upper triangular space in scapular region houses:
- Axillary nerve
 - Radial nerve
 - Posterior circumflex humeral artery
 - Circumflex scapular artery
74. The first dorsal metatarsal artery is a branch of:
- Dorsalis pedis artery
 - Arcuate artery
 - Posterior tibial artery
 - Lateral tarsal artery
75. The boundaries of the femoral triangle are all except:
- Laterally by medial border of Sartorius
 - Medially by medial border of adductor longus
 - Medially by lateral border of adductor longus
 - Base by inguinal ligament
76. True about bronchopulmonary segment:
- Avascular intersegmental planes
 - Complete vascular segment
 - One segment drains into more than one pulmonary vein
 - One pulmonary vein drain in one segment
77. The SA node is situated at:
- Sulcus terminalis
 - Triangle of Koch
 - Fossa ovalis
 - Coronary sinus
78. The largest vein of the heart is:
- Great cardiac vein
 - Middle cardiac vein
 - Anterior cardiac vein
 - Coronary sinus
79. The medial umbilical folds are created by peritoneum overlying the:
- Urachus
 - Inferior epigastric arteries
 - Obliterated umbilical arteries
 - Lateral border of rectus sheath
80. The lesser omentum has following contents except:
- Hepatic artery

Team Motivation FMGE Coaching Academy

Mock Test – 2

- b. Hepatic vein
c. Portal vein
d. Bile duct
81. The internal anal sphincter is a part of:
a. Puborectalis muscle
b. Deep perineal muscle
c. Internal longitudinal fibres
d. Internal circular fibres
82. The basal ganglia nucleus is:
a. Thalamus
b. Red nucleus
c. Lentiform nucleus
d. Dentate nucleus
83. The conscious proprioception is carried by:
a. Anterior spinothalamic tract
b. Lateral spinothalamic tract
c. Dorsal column tract
d. Dorsal spino cerebellar tract
84. Middle meningeal artery is a branch of:
a. Middle cerebral artery
b. Superficial temporal artery
c. Vertebral artery
d. Maxillary artery
85. Which of the following is enrichment medium?
a. Alkaline peptone water
b. Loeffler serum slope
c. Deoxycholate citrate agar
d. MacConkey's agar
86. A farmer developed a swelling in the inguinal region which later ulcerated. What stain can be used to detect bipolar stained organisms?
a. Albert's stain
b. Waysons stain
c. Ziehl neelsen stain
d. Nigrosin stain
87. A 20 year-old man presented with hemorrhagic colitis. The stool sample grew Escherichia coli in pure culture. The following serotype of E. coli is likely to be the causative agent:
a. O 157:H7
b. O 159:H7
c. O 107:H7
d. O 55:H7
88. A 30 year-old woman with a bad obstetric history presents with fever. The blood culture from the patient grows Gram-positive small to medium coccobacilli that are pleomorphic, occurring in short chains. Direct wet mount -- from the culture shows tumbling motility. The most likely organism is:
a. Listeria Monocytogenes
b. Corynebacterium sp.
c. Enterococcus sp.
d. N. gonorrhoea
89. The most common agent associated with neonatal bacterial meningitis is:
a. Haemophilus influenzae type b.
b. Neisseria meningitidis.
c. Streptococcus pneumoniae.
d. Streptococcus agalactiae.
90. All are causing neonatal meningitis except
a. Streptococcus agalactiae
b. E. Coli
c. Listeria monocytogenes
d. Herpes Simplex
91. An HIV positive patient complains of visual disturbances. Fundal examination shows bilateral retinal exudates and perivascular hemorrhages. Which of the following viruses are most likely to be responsible for this retinitis:
a. Herpes simple virus.
b. Human herpes virus 8.
c. Cytomegalovirus
d. Epstein-Barr(EB) vints.
92. All of the following statements are true regarding rotavirus except
a. It is transmitted by feco-oral route.
b. Asymptomatic infections are common in children.
c. There is a single serotype causing infection
d. Live attenuated vaccine produces herd immunity.
93. Which of the following toxins acts by inhibiting protein synthesis:
a. Cholera toxin.

Team Motivation FMGE Coaching Academy

Mock Test – 2

- b. Shiga toxin.
c. Pertussis toxin
d. LT of enterotoxigenic E.coli.
94. A 20 years old male patient presents to the STD clinic with a genital ulcer. The gram stain of the smear from ulcer shows Gram -ve bacilli. The most appropriate media for culture would be:
a. Thayer-Martin Medium
b. Blood agar with X & V factors.
c. Chocolate agar with isovital X
d. Tellurite blood agar.
95. All are true for CMI, except
a. Depressed in lymphoreticular malignancies
b. obstruction to the lymph circulation
c. Transiently following viral infections like , measles
d. excessive production of abnormal immunoglobulins
96. LE cell phenomenon is part of
a. Rheumatoid arthritis
b. SLE
c. PAN
d. Addison's disease
97. Agar not used for cultivation of Staphylococcus
a. blood agar
b. Macconkey agar
c. ludlam's medium
d. Chocolate agar
98. What is the guideline to deltopectoral groove:
a. Axillary vein
b. Cephalic vein
c. Musculo-cutaneous nerve
d. Median nerve
99. Which of the following muscle does not form rotator cuff of shoulder:
a. Subscapularis
b. Supraspinatus
c. Infraspinatus
d. Teres major
100. What is the commonest complication of fracture of mid shaft of humerus:
a. Malunion
b. Non union
c. Radial nerve paralysis
d. Ulnar nerve injury
101. Which of the following bursa produces symptoms in shoulder impingement syndrome:
a. Subacromial bursa
b. Subdeltoid bursa
c. Bursa in relation of subscapularis tendon
d. Bursa in relation to latissimus dorsi
102. The medial cord of the brachial plexus receives contributions from all roots of the plexus
a. the 5th and 6th cervical roots
b. the 5th , 6th and 7th cervical roots
c. the 6th , 7th and 8th cervical roots
d. the 8th cervical and 1st dorsal roots
103. All of the following cause Microcytic Hypochromic anemia except:
a. Lead poisoning
b. Thalassemia
c. Iron deficiency anemia
d. Fanconi's anemia
104. Anemia of chronic disease is characterized by all except:
a. Decrease serum iron
b. Increased total iron binding capacity
c. Increased serum ferritin
d. Increased macrophage iron in bone marrow
105. Heterozygous sickle cell anemia gives protection against:
a. Parvo virus
b. Malaria
c. Thalassemia
d. Dengue fever
106. Coombs positive hemolytic anemia associated with:
a. TTP
b. PAN
c. SLE
d. HUS

Team Motivation FMGE Coaching Academy

Mock Test – 2

107. Which of the following is a major criteria for diagnosis of polycythemia vera:
- Presence of JAK – 2 mutation
 - Low erythropoietin level
 - High leucocyte alkaline phosphatase (increased LAP score)
 - Thrombocytosis
108. Burkitt's Lymphoma is associated with which of the following viruses:
- EBV
 - HTLV – 1
 - HHV – 8
 - Adenovirus
109. Mid-Diastolic murmur with presystolic accentuation is typically seen in:
- Mitral stenosis
 - Mitral regurgitation
 - Aortic stenosis
 - MVP
110. A QRS duration between 100 to 120 millisecond suggests all of the following, except:
- Normal
 - Left anterior fascicular block
 - Left posterior fascicular block
 - Left bundle branch block
111. The following ECG findings are seen in hypokalemia:
- Increased PR interval with ST depression
 - Increased PR interval with peaked T wave
 - Prolonged QT interval with T wave inversion
 - Decreased QT interval with ST depression
112. The drug of choice in patients with Wolff-Parkinson-White syndrome with atrial fibrillation is:
- Digitalis
 - Procainamide
 - Verapamil
 - Adenosine
113. All of the following are used in the initial management of acute life threatening cardiogenic pulmonary edema, except:
- Digoxin
 - Morphine
 - Furosemide
 - Positive pressure ventilation
114. A patient presents 12 hrs following a myocardial infarction. Test of choice:
- Lactate dehydrogenase
 - Cardiac troponins
 - Creatinine phosphokinase
 - Myoglobin
115. A male patient presents with headache, profuse sweating and palpitations with a blood pressure of 180/120mm Hg. The drug of choice would be:
- Nifedipine
 - Labetalol
 - Prazocin
 - Phenoxy benzamine
116. Diagnosis criterion for infective endocarditis include all except:
- Positive echocardiogram
 - Positive blood culture
 - Raised ESR
 - Positive Rheumatoid factor
117. False statement about type 1 respiratory failure is:
- Decreased PaO₂
 - Decreased PaCO₂
 - Normal PaCO₂
 - Normal A-a gradient
118. A patient presents with decreased vital capacity and total lung volume. What is the most probable diagnosis:
- Bronchiectasis
 - Sarcoidosis
 - Cystic fibrosis
 - Asthma
119. All of the following drugs are useful in the treatment of a patient with acute bronchial asthma:
- Impratropium
 - Salbutamol

Team Motivation FMGE Coaching Academy

Mock Test – 2

- c. Montelukast
d. Hydrocortisone
120. Caplan syndrome is pneumoconiosis with:
a. Lymphadenopathy
b. Congestive cardiac failure
c. Rheumatoid arthritis
d. HIV
121. A 40 years old man presented with repeated episodes of bronchospasm and hemoptysis. Chest X-ray revealed perihilar bronchiectasis. The most likely diagnosis is:
a. Sarcoidosis
b. Idiopathic pulmonary fibrosis
c. Extrinsic allergic alveolitis
d. Bronchopulmonary aspergillosis
122. A patient presented with ARF with complete anuria, but a normal ultrasound. Next investigation is:
a. Intravenous Pyelography
b. Antegrade pyelography
c. Retrograde pyelography
d. Radio renogram
123. Which of the following values are suggestive of acute tubular necrosis?
a. Urine osmolality > 500
b. Urine sodium > 40
c. Blood urea nitrogen / plasma creatinine > 20
d. Urine creatinine / plasma creatinine > 40
124. A girl aged 8 years has been admitted for dialysis. She has serum K of 7.5 meq/L, which is the fastest way to reduce the hyperkalemia:
a. Kayexalate enema
b. Infusion of insulin + glucose
c. IV calcium gluconate
d. IV NaHCO₃
125. All of the following are decreased in nephrotic syndrome:
a. Serum transferrin
b. Serum fibrinogen
c. Serum ceruloplasmin
d. Serum albumin
126. Reflux nephropathy with proteinuria in the nephrotic range may be seen in patient with:
a. Membranous glomerulonephritis
b. Focal segmental glomerulosclerosis
c. Nodular glomerulosclerosis
d. Crescentic glomerulonephritis
127. An 8 years old boy presents to casualty with history of diarrhoea, followed by decreased urine output. Blood examination shows thrombocytes 90000/cm³, diagnosis is:
a. Hemolytic uremic syndrome
b. Disseminated intravascular coagulation
c. Hemophilia
d. Idiopathic thrombocytopenia purpura
128. The neonatal kidney achieves concentrating ability equivalent to adult's kidney by:
a. One year of age
b. 18 month of age
c. 3 to 6 months of age
d. Just before puberty
129. A patient with H. pylori infection is treated with drugs. The best method to detect presence of residual H. pylori infection in this person is:
a. Rapid urease test
b. Urea breath test
c. Endoscopy and biopsy
d. Serum anti H. pylori titre
130. A 25 years male had pigmented macules over the palm, sole and oral mucosa. He also has anemia and pain in abdomen. The most probable diagnosis is:
a. Albright's syndrome
b. Cushing's syndrome
c. Peutz-Jegher's syndrome
d. Incontinentia pigmenti
131. Stigmata of chronic liver disease include all of the following except:
a. Parmer erythema
b. Spindernaevi
c. Testicular atrophy
d. Subcutaneous nodules
132. Kalu, aged 54 years, who is known diabetic patient, develops cirrhosis. There is

Team Motivation FMGE Coaching Academy

Mock Test – 2

- associated skin hyperpigmentation and restrictive cardiomyopathy, which of the following is the best initial test to diagnosis this case:
- Iron binding capacity
 - Serum ferritin
 - Serum copper
 - Serum ceruloplasmin
133. A patient presents with melena normal renal function, hypertension and mononeuritis multiplex. The most probable diagnosis is:
- Classical polyarteritis nodosa
 - Microscopic polyangitis
 - Henoch-Schonlein purpura
 - Buerger's disease
134. A 20 years old girl presents with abdominal pain, arthralgia and a palpable purpuric rash all over the body. The most likely diagnosis is:
- Henoch Schonlein purpura
 - Kawasaki disease
 - Hemolytic uremic syndrome
 - Idiopathic thrombocytopenic purpura
135. 58 yrs/M evaluated for Rt. Sided pleural effusion, protein 5.8 g/dl (serum protein 7.2 g/dl) LDH-285 IU/L, (serum LDH 320 IU/L), mesothelial cells 10%. Which of the following is unlikely
- Lung Cancer
 - Mesothelium
 - Pulm Embolism
 - TB
136. All are indications in a case of hemothorax for thoracotomy, except?
- Chest drainage >1500 ml/day
 - Chest drainage >100 ml per hour for 3 hrs
 - Large chest wall defect
 - Proven oesophageal injury
137. A 35 yr old male patient was brought in ER with H/O RTA. He is severely dyspnoenic and hypotensive. On examination rt. 5th & 6th rib # was detected with rt hemothorax. Right sided ICD was done in 6th ICS. Four hours after ICD, chest drainage is 1200 ml with massive air leak, SpO2 is 82, and patient is still hypotensive. Now next step of manage should be?
- Immediate intubation and Mechanical ventilation.
 - Immediate thoracoscopy.
 - Immediate Thoracotomy.
 - Conservative line of management with blood transfusions.
138. Classic signs are Beck's triad includes all except?
- Hypotension
 - Venous distension
 - Muffled heart sounds
 - Dyspnoea
139. All of the following are diagnostic criteria for SIRS except?
- Temp > 38 degree.
 - HR > 90 / min.
 - RR > 20 / min
 - Systolic BP < 90 mm of Hg.
140. Commonest melanoma seen in elderly people on the face is?
- Nodular.
 - Superficial spreading.
 - Acral Lentiginous.
 - Lentigo Maligna melanoma
141. Morbid obesity is defined as?
- One and one half time ideal body weight.
 - BMI greater than 40 kg/ m.
 - 20% above ideal body weight for adolescent.
 - Weight Greater than 40 kg above normal.
142. A 50 year old smoker male presents with pain along the left arm and ptosis. His chest radiograph shows a soft tissue opacity at the left lung apex with destruction of adjacent ribs. The picture is suggestive of:
- Adenocarcinoma lung
 - Bronchial carcinoid
 - Pancoast tumour
 - Bronchoalveolar carcinoma
143. Microcytic anaemia is seen in the deficiency of?
- Copper
 - Magnesium.
 - Manganese.
 - Chromium.
144. Which of the following disappears by itself by the age of 7-8 years?
- Salmon's patch.

Team Motivation FMGE Coaching Academy

Mock Test – 2

- b. Strawberry angioma.
c. Port wine stain.
d. Plexiform angioma.
145. In depressed # of skull, surgery is indicated if displacement is more than?
a. 0.5 cm.
b. 1 cm.
c. 2 cm.
d. 4 cm.
146. False statement regarding Bochdalek hernia is?
a. More common in boys.
b. It is the commonest type of congenital diaphragmatic hernia.
c. More common on the left side.
d. More common on the anterior part (retrosternal).
147. Clotting factors that rapidly deteriorates in stored blood are?
a. II & VII.
b. V & VIII.
c. V & VII
d. II & IX.
148. False statement about Entrogenic cyst is?
a. Thick walled cyst.
b. May be lined by columnar epithelium.
c. Usually seen at antimesenteric border.
d. Treatment is. Resection of gut with the cyst
149. True statement about Gas Gangrene is?
a. Most common causative organism is Clostridium septicum.
b. Commonest cause of non traumatic gas gangrene is C. Perfringens.
c. CPK, Myoglobin, and K level may be high.
d. Drug of choice is ceftriaxone.
150. False statement about burgers disease is?
a. Commonly affects old people.
b. It is an occlusive disease of small and medium sized vessels.
c. More common in lower socio-economic strata.
d. It is more prominent in HLA-A and B Groups.
151. Which of the following is not a feature of Wermer syndrome?
a. Pheochromocytoma.
b. Pancreatic endocrine tumour.
c. Parathyroid adenoma.
d. Pituitary tumours.
152. In a blast injury, which of the following organ is least vulnerable to the blast wave.
a. G.I. tract
b. Lungs
c. Liver
d. Ear drum
153. CT appearance of extradural hematoma is?
a. Hyper dense biconvex.
b. Hyper dense biconcave.
c. Hypo dense concavo-concave
d. Hyper dense concavo-convex
154. All are causes of intrauterine growth retardation except:
a. Anemia
b. Pregnancy induced hypertension
c. Maternal heart disease
d. Gestational diabetes
155. By the age of 1 yr a child can do all except:
a. Play a simple ball game
b. Assisted pincer grasp
c. Gives object on request
d. Stand by self
156. Not a features of hypothyroidism is:
a. Short metacarpals
b. Delayed puberty
c. Delayed bone age
d. Altered upper and lower body proportion
157. All are causes of hyponatremia except:
a. Primary polydipsia
b. SIADH
c. Diabetes insipidus
d. Aldosterone deficiency
158. Which of the following body measurement is best for rapid screening of PEM?
a. Weight for age
b. Height for age
c. Weight for height
d. Mid upper arm circumference
159. Rickets is differentiated from achondroplasia by:
a. Increased bone thickness

Team Motivation FMGE Coaching Academy

Mock Test – 2

- b. Increased diaphyseal length
c. Increased serum acid phosphatase
d. Increased epiphyseal space and fraying of distal end
160. Best resuscitation methods for a child with Apgar score 4:
a. IV fluid
b. Gentle massage
c. Mouth to mouth respiration
d. Endotracheal intubation
161. All are commonly observed in postmature infant except:
a. Long nails
b. Increased alertness
c. Abundance of lanugos
d. Abundance of scalp hair
162. Ganciclovir is most effective against viral infection:
a. HSV Type I
b. HSV Type II
c. V. zoster
d. CMV
163. All are true regarding administration of betamethasone to mother with premature delivery except:
a. Neonatal morbidity better
b. Helps lung maturity
c. Prevents hyperbilirubinemia
d. Decrease IVH
164. Most common cause of convulsion on 1st day of life in a new born is:
a. Anoxia
b. Head injury
c. Hypoglycemia
d. Hypocalcemia
165. Commonest worldwide cause of primary immunodeficiency:
a. Isolated IgA deficiency
b. Variable immunodeficiency
c. Combined immunodeficiency
d. AIDS
166. A 7 month old infant has been hospitalised with respiratory disease, fever and minimal lung signs. The X-ray reveals hyperlucency. Blood count is normal. The most likely diagnosis is:
a. Bronchopneumonia
b. Collapse of lungs
c. Bronchiolitis
d. Foreign body
167. Erythema marginatum is seen in:
a. Typhus fever
b. Typhoid fever
c. Enteric fever
d. Rheumatic fever
168. A 29 day old child presents with CCF and left ventricular hypertrophy. There was an associated short systolic murmur. Probable diagnosis is:
a. TOF
b. VSD
c. Transposition of great arteries
d. Rheumatic fever
169. Tick the drug with nonselective beta-adrenoblocking activity:
a. Atenolol
b. Propranolol
c. Metoprolol
d. Nebivolol
170. A ganglioblocking drug for hypertension treatment is:
a. Hydralazine
b. Tubocurarine
c. Trimethaphan
d. Metoprolol
171. Radioiodines (I131 and I132) is suitable for:
a. Elderly patients (over 45 years)
b. Pregnant women
c. Nursing mothers
d. Younger patients
172. Radioiodines in the body emit:
a. Mainly β radiations
b. Mainly γ radiations
c. β and γ radiations equally.
d. Do not emit any radiation, therefore, are safe
173. All are true about Exenatide except:
a. Synthetic GLP-1 agonist
b. Newer oral antidiabetic drug
c. Increase insulin secretion
d. Slows gastric emptying
174. Mifepristone (RU-486) is:

Team Motivation FMGE Coaching Academy

Mock Test – 2

- a. Antiprogestin
b. Antiandrogen
c. Antiestrogen
d. Androgen
175. Biguanides are used in the following conditions, EXCEPT:
a. As a supplement to sulphonylurea, where it is insufficient to give good results
b. In over weight diabetics
c. To reduce insulin requirements
d. In case of hyperglycemic shock
176. Pick out the right statement:
a. Microsomal oxidation always results in inactivation of a compound
b. Microsomal oxidation results in a decrease of compound toxicity
c. Microsomal oxidation results in an increase of ionization and water solubility of a drug
d. Microsomal oxidation results in an increase of lipid solubility of a drug thus its excretion from the organism is facilitated
177. Which of the following is NOT a primary (degenerative) dementia?
a. Alzheimer's disease
b. Dementia with lewy bodies and Parkinson's disease
c. Huntington's disease
d. Vascular dementia
178. Confabulation is typically seen in
a. Alcoholism
b. Depression
c. Mania
d. Delirium
179. NREM sleep is associated with
a. Frequent dreaming
b. Night terrors
c. Increased BP
d. Penile erection
180. The combination of alcohol & disulfiram results in nausea, vomiting & hypertension as a result of accumulation of-
a. NADH
b. Methanol
c. Acetic acid
d. Acetaldehyde
181. A 20 year old girl enjoys wearing male clothes. It gives her more confidence and after these episodes she is absolutely normal girl. The likely diagnosis is-
a. Dual role transvestism
b. Fetishistic transvestism
c. Gender identity disorder
d. Intersexuality
182. Drugs used in pulmonary HTN are all except-
a. Beta-blockers
b. Endothelin receptor antagonist- Bosentan
c. PDE-5 inhibitors- Sildenafil
d. Prostacyclines- Iloprost
183. Provocative test for myasthenia gravis diagnosis done by-
a. Tubocurarine
b. Tensilon
c. Neostigmine
d. Pyridostigmine
184. Which of the following is false about salmeterol-
a. Regular use may worsen asthma
b. First long acting selective beta-2 agonist
c. More beta- 2 selective than salbutamol
d. Effective for acute asthmatic attack
185. Which of the following drug shows "Therapeutic window" phenomenon
a. Carbamazepine
b. Diazepam
c. Chlorpromazine
d. Clonidine
186. Cyt-P-450 is inhibited by-
a. Phenobarbitone
b. Cimetidine
c. Phenytoin
d. CCl₄
187. Sudden increase in blood sugar in Diabetics cause
a. Myopia
b. Presbyopia
c. Anisometropia
d. Hypermetropia
188. Atropine is the treatment of choice for corneal ulcer because of
a. It dilates the pupil and increases flow of fresh aqueous rich in nutrients and antibodies
b. Gives rest to iris and ciliary body
c. Prevents formation of posterior synechiae
d. All of the above

Team Motivation FMGE Coaching Academy

Mock Test – 2

189. Interstitial keratitis is seen in all except
- Tuberculosis
 - Sarcoidosis
 - Leprosy
 - Syphilis
190. Persistent Primary Hyperplastic Vitreous (PHPV) is associated with:
- Patau syndrome
 - Edward syndrome
 - Trisomy 14
 - Down's syndrome
191. 'D' shaped pupil is seen in
- Glaucoma
 - Dislocation of lens
 - Iridodialysis
 - Iridocyclitis
192. In a case of hypertensive uveitis, most useful drug to reduce intraocular pressure is:
- Pilocarpine
 - Latanoprost
 - Physostigmine
 - Dipivefrin
193. Steroid cataract is
- Anterior polar
 - Posterior subcapsular
 - Nuclear
 - Zonular
194. Lens develop from
- Coelomic epithelium
 - Endoderm
 - Surface ectoderm
 - Mesoderm
195. Lens contains the oldest cells in
- Nucleus
 - Anterior surface of lens
 - Posterior surface of lens
 - Nucleo-cortical junction
196. Neovascular glaucoma can occur in
- Diabetes
 - Eales disease
 - Central retinal vein occlusion
 - All of the above
197. Retrolental fibroplasia occurs in
- Mature infants
 - Premature infants
 - Intra uterine growth retardation
 - Post mature infants
198. Painful movement of eyes is a feature of
- Gonococcal conjunctivitis
 - Acute iritis
 - Retrolental neuritis
 - Acute congestive glaucoma
199. A man presents 6 hrs after head injury complains in of mild proptosis and scleral hyperemia. The probable diagnosis is
- Pneumo orbit
 - Carotico-cavernous fistula
 - Retro orbital hematoma
 - Orbital cellulitis
200. In a child with retinoblastoma, which of the following is not a common finding in the X-ray
- Intraorbital calcification
 - Intracerebral calcification
 - Multiple cranial deposits
 - Widening of optic foramen
201. Pulsating unilateral exophthalmos is caused by
- Lateral sinus thrombosis
 - Carotico-cavernous fistula
 - Thyrotoxicosis
 - Retinoblastoma
202. A 75 year old man presented with dysphagia and regurgitation of old food. Ba swallow showed following picture. Which of the following statement is false about this condition?
- Lump on left side of neck is more common than right side.
 - Aspiration and pneumonitis is most common complication
 - Balloon dilatation is treatment of choice.
 - Mainly caused by increased tone of cricopharyngeus muscle
203. A 70 year old lady presented with dysphagia and retrosternal pain. Plain x-ray revealed a air fluid level in retro cardiac space. Which is best advice for this patient?
- Immediate surgery should be done considering the high risk of strangulation.
 - Patient should be managed by PPI and Dietary modifications.
 - Further CECT should be done to confirm the diagnosis.
 - This is a case of spontaneous esophageal rupture.
204. After repeated episodes of retching and vomiting patient feels a sudden onset of severe chest pain in the lower thorax. The

Team Motivation FMGE Coaching Academy

Mock Test – 2

- pain radiates to the back or left shoulder. X-ray showed left pleural effusion. Which triad will be expected to be found in this patient?
- Meckler triad.
 - Borchardt Triad.
 - Riggler Triad.
 - Beck's triad
205. A 54 year old woman had severe chest pain intermittently after meals. Extensive cardiac workup has been negative. Esophageal manometry before and after swallowing a 5 ml water bolus shows lower esophageal resting pressure 30 mm Hg, length of 3 cm, and residual pressure of 5 mm Hg. Single peristalsis contraction had an amplitude of 204 mm Hg 5 cm above the LES. And a duration of 7 sec. These measurement are most consistent with?
- Nutcracker esophagus.
 - Achalasia.
 - Diffuse esophageal spasm.
 - Hypertensive lower esophageal sphincter.
206. A young patient presented with dysphagia (more for liquid) with bird beak appearance of Ba swallow. Which of the following statement is false about its treatment modalities?
- Botulinum toxin injection is associated with high recurrence rate.
 - Balloon dilatation may cause oesophageal rupture in 5% of cases
 - Calcium channel blocker is only used in old and unfit patient as it gives relief only in 10% of patients.
 - Surgical Resection and an anastomosis is the treatment of choice.
207. A new born child with excessive drooling of saliva with history of choking with each feed should be best evaluated by?
- Upper GI endoscopy.
 - Ba swallow
 - Nasogastric tube insertion and X-Ray
 - CECT scan.
208. A low birth weight child (with birth weight of <4 pounds) with trachea-oesophageal fistula and severe aspiration pneumonitis is initially best managed by?
- Feeding gastrostomy
 - IV fluid and antibiotics.
 - Total parenteral nutrition.
 - Immediate thoracotomy and surgical repair.
209. Which of the following is not true about tracheo-esophageal fistula?
- It may be associated with Down's syndrome.
 - Commonest type is pure esophageal atresia.
 - May be associated with polyhydramnios.
 - Primary measure is to decrease risk of aspiration.
210. False statement about esophageal leiomyoma is?
- This is most common benign tumour of the esophagus.
 - Well encapsulated and on Barium swallow shows smooth filling defect within lumen
 - Resection and anastomosis is best treatment.
 - Usually asymptomatic but most common presenting symptom is dysphagia.
211. Which of the following is not a risk factor for esophageal cancer?
- Tylosis
 - HPV
 - Mediastinal fibrosis
 - Caustic injury
212. CT Scan in Carcinoma Esophagus is least useful in describing
- T staging
 - Nodal staging

Team Motivation FMGE Coaching Academy

Mock Test – 2

- c. Distant Metastasis
d. Omental involvement
- 213.Regarding dysphagia lusoria all are true except?
- Occurs due to compression by aberrant vessel originating distal to subclavian artery
 - Occurs due to external compression
 - Resecting the aberrant vessel will completely cure the disease
 - Ligating the vessel distally will cure the disease
- 214.False statement about congenital hypertrophic pyloric stenosis is?
- Incidence is 3 per 1000.
 - Commonly presents 4 weeks after birth.
 - USG is investigation of choice.
 - Pyeloplasty is treatment of choice.
- 215.Most common type of gastric volvulus is?
- Organoaxial.
 - Mesentricoaxial.
 - Incidence is equal for both.
 - Combined.
- 216.Polyostotic fibrous dysplasia, endocrine disturbance and café-au-lait spots form a classical triad of?
- Gardner's syndrome.
 - Ollier's disease.
 - Maffucci's syndrome.
 - McCune-Albright syndrome
- 217.What would be the expected imaging findings in diaphyseal aclasis?
- Multiple enchondromas.
 - Multiple enostoses.
 - Multiple osteochondromas.
 - Multiple osteomas.
- 218.In a 40-year-old woman complaining of wrist pain, radiographs reveal sclerosis and collapse of the lunate bone. What is the most likely diagnosis?

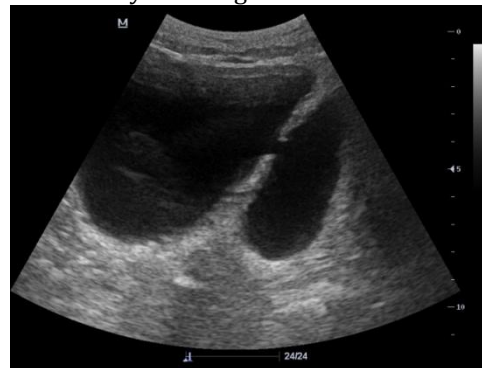
- Freiberg's disease.
- Kienboeck's disease.
- Kohler's disease.
- Sever's disease.

219. Identify the image-



- Fetal edema
- Increased Nuchal translucency
- Lymphangioma
- Occipital meningocele

220. Identify the image-



- Hydronephrosis
- Urinary bladder diverticulum
- Ovarian cyst
- Pelvic abscess

221. "Living Ligature of Uterus" term is used for:

- Perinatrium
- Endometrium
- Middle layer of myometrium
- Outer layer of myometrium

222. By which of the following test β hCG can be detected earliest in maternal serum or urine:

- Pregnancy kit
- ELISA
- Radio immunoassay
- Gravindex test

Team Motivation FMGE Coaching Academy

Mock Test – 2

223. 'Morula' stage of developing embryo is formed in:
- FT
 - Ovary
 - Uterus
 - Cervix
224. Decidual space is completely obliterated by:
- 12th week
 - 16th week
 - 18th week
 - 20th week
225. A pregnant woman is found to have excessive accumulation of amniotic fluid. Such condition is associated with all except:
- Twinning
 - Micro-anencephaly
 - Oesophageal atresia
 - Bilateral renal agenesis
226. "Face to Pube" delivery occurs in which pelvis commonly:
- Gynecoid
 - Flat pelvis
 - Android
 - Anthropoid pelvis
227. A patient choriocarcinoma, having deranged LFT which drug is preferred for treatment:
- MTx
 - Cyclophosphamide
 - Chlorambucil
 - Actinomycin – D
228. Commonest and most constant symptoms of ectopic pregnancy is:
- Amenorrhoea
 - Vaginal bleeding
 - Shoulder pain
 - Abdominal pain
229. Which contraceptive are contraindicated in lactating female for initial 6 months:
- POP
 - DMPA injection
 - IUCD
 - Centchroman
230. Height, weight of uterus, just after delivery is:
- 16 weeks, 800 gms
 - 20 weeks, 800 gms
 - 20 weeks, 1000 gms
 - 18 weeks, 1000 gms
231. Most common cyanotic and acyanotic congenital heart disease during pregnancy is:
- TOF, VSD
 - TOF, ASD
 - ASD, PDA
 - TOF, PDA
232. 1st line management of gestational diabetes is:
- Insulin
 - Oral hypoglycemic drugs
 - Dietary regulation
 - Exercise
233. All of the following genital tract anomalies are associated with DES exposure in utero except:
- Cock's COMB cervix
 - T shaped uterine cavity
 - Longitudinal septa in vagina and cervix
 - Hypoplastic cervix
234. Which fetal malformation was 1st detected prenatally by USG:
- Spina bifida
 - Anencephaly
 - Hydrocephalous
 - Fetal ascites
235. "Chignon" term is related to:
- Forceps
 - Ventouse
 - Caesarean section
 - Suction evacuation
236. The mucosal lining in vagina is composed of:
- Transitional
 - Ciliated columnar
 - Stratified squamous non keratinized
 - Pseudostratified columnar
237. Hormone responsible for ferning pattern of cervical mucus:
- Progesterone
 - Estrogen
 - LH
 - Prolactin
238. Commonest uterine anomaly is:

Team Motivation FMGE Coaching Academy

Mock Test – 2

- a. Uterus unicornis
b. Uterus bicornis
c. Uterus didelphys
d. Subseptate uterus
239. Most important manifestation of ureterovaginal fistula is:
a. Hydronephrosis
b. Overflow incontinence
c. Stress incontinence
d. Continuous incontinence
240. Features of bacterial vaginosis are all of the following except:
a. Abundant lactobacillus
b. $\text{pH} > 5$
c. Clue cells
d. It is sexually transmitted
241. Drugs of choice for bacterial vaginosis:
a. Ciprofloxacin
b. Doxycycline
c. Tetracycline
d. Metronidazole
242. A 46 years old lady has abnormal uterine bleeding with simple hyperplasia of endometrium. The treatment of choice would be:
a. Total hysterectomy
b. Progesterone
c. Estrogen + progestogen
d. Estrogen
243. Meig's syndrome is associated with ovarian:
a. Teratoma
b. Brenner tumour
c. Fibroma
d. Theca cell tumour
244. Sensitivity of conventional PAP smear in picking up cervical cancer is:
a. 70%
b. 80%
c. 90%
d. 100%
245. Endometrial carcinoma with vaginal metastasis, what FIGO stage would be:
a. Stage III a
b. Stage III b
c. Stage III c
d. Stage IV a
246. Hematocolpos is seen in:
a. Septate uterus
b. Bicornuate uterus
c. Unicornuate uterus
d. Imperforate hymen
247. Hirsutism is seen in all except:
a. Acromegaly
b. Hyperthyroidism
c. Arrhenoblastoma
d. PCOD
248. 18 years old girl presented with primary amenorrhoea, normal breast development, absent pubic and axillary hair. Condition is:
a. Turner syndrome
b. Mullerian agenesis
c. Premature ovarian failure
d. Testicular feminizing syndrome
249. What is the most common complication after abdominal hysterectomy:
a. Ureteral injury
b. Intestine dysfunction
c. Urinary bladder atony
d. Vaginal vault prolapse
250. Gynaecomastia is seen in all except:
a. Spironolactone
b. Hypothyroidism
c. Klinefelters syndrome
d. Cirrhotic liver disease
251. Cartilage of pinna is deficient at
a. Triangular fossa
b. Helix
c. Posterior crux
d. Incisura terminalis
252. A male aged 60 years has foul breath, he regurgitates food that is eaten 3 days ago. Likely diagnosis is
a. Zenker's diverticulum
b. Meckel's diverticulum
c. Scleroderma
d. Achalasia cardia
253. A lady has bilateral hearing loss since 4 years which worsened during pregnancy. Type of impedance audiometry graph will be :

Team Motivation FMGE Coaching Academy

Mock Test – 2

- a. Ad
b. As
c. B
d. C
254. Rhinophyma is associated with:
a. Hypertrophy of the sebaceous glands
b. Hypertrophy of sweat glands
c. Hypertrophy of endothelial cells
d. Hypertrophy of epithelial cells
255. The most common and earliest manifestation of carcinoma of the glottis is:
a. Hoarseness
b. Haemoptysis
c. Cervical lymph nodes
d. Stridor
256. Which of the following structures are preserved in radical neck dissection?
a. Vagus nerve
b. Accessory Nerve
c. Internal jugular vein
d. Sternocleidomastoid muscle
257. All of the following muscles are derived from second branchial arch except
a. Posterior belly of digastric
b. Ant belly of digastric
c. Stapedius
d. Orbicularis oculi
258. Which of the following is not a typical feature of Ménière's disease?
a. Sensorineural deafness
b. Pulsatile tinnitus
c. Vertigo
d. Fluctuating deafness
259. Endolymph is formed in
a. Endolymphatic sac
b. Scala Media
c. Scala tympani
d. Utricle
260. Which among these best describes shape of cricoid cartilage
a. "C" shaped
b. Circular
c. Oval
d. Signet ring
261. Which of these is not an indication for use of nasal steroid sprays
a. Allergic fungal sinusitis
b. Acute fungal sinusitis
c. Non allergic vasomotor Rhinitis
d. Anosmia
262. Which of the following media is used for culturing Salmonella?
a. VL-broth
b. Sabouraud agar
c. Slanetz Bartley
d. Selenite Broth
263. A diabetic pt. presents with excruciating pain in ear & facial paralysis. On local examination of auditory canal shows edema, erythema, purulent discharge, debris & granulation tissue. CT shows bone erosion. He is suffering from
a. Otitis internahemorrhagica
b. Nemerodermatitis
c. Malignant otitis externa
d. Diffuse otitis externa
264. Management of choice in deafness due to attic antral perforation is
a. Modified radical mastoidectomy
b. Myringoplasty
c. Tympanoplasty
d. Grommet
265. A pt. of unsafe CSOM presents with lateral rectus palsy, pain deep to eye. He is suffering from
a. Lateral sinus thrombophlebitis
b. Petrositis
c. Temporal abscess
d. Otitis hydrocephalus
266. In which part of the prostate gland is a carcinoma most likely to arise?
a. Central zone.
b. Peripheral zone.
c. Peri-urethral zone.
d. Transitional zone.
267. A diagnosis of von Hippel Lindau disease is being considered. The presence of which of

Team Motivation FMGE Coaching Academy

Mock Test - 2

the following intracranial tumours would be strongly supportive of this diagnosis?

- a. Astrocytoma.
- b. Craniopharyngioma.
- c. Haemangioblastoma.
- d. Optic nerve glioma.

268. Maximum radiation exposure is seen in -

- a. Bone Scan
- b. CT Abdomen.
- c. X Ray Lumbosacral Spine.
- d. MRI.

269. Identify the image



- a. Cholelithiasis with biliary sludge
- b. Renal calculus with pyonephrosis
- c. Vesicle calculus with cystitis
- d. Appendicolith with abscess

270. Identify the image-



- a. Liver abscess
- b. Simple liver cyst
- c. Hydatid cyst
- d. Cystic metastases

271. All are true about liquefactive necrosis except:

- a. Seen in hypoxic injury in CNS
- b. Loss of complete cell outline
- c. Firm texture
- d. Can be seen in fungal infection

272. True about lipofuscin is:

- a. Insoluble in cytoplasm
- b. Causes injury to cell
- c. Reddish brown
- d. Can be seen in obesity

273. All of the following complement cause release of histamine from mast cells except:

- a. C3a
- b. C4a
- c. C5a
- d. C6a

274. Following is true about cardiac edema except:

- a. Gravity dependent edema
- b. First seen around face & eyes
- c. Protein in urine present
- d. Due to decreased plasma osmotic pressure

275. Brown induration of lungs is seen in:

- a. Right ventricular failure
- b. Left ventricular failure
- c. Pulmonary hemosiderosis
- d. Diffuse alveolar damage

276. Lines of Zahn are seen in:

- a. Antemortem arterial thrombi
- b. Postmortem clot
- c. Fat embolism
- d. Amniotic fluid embolism

277. Hyperacute rejection in organ transplant is due to:

- a. Preformed antibodies
- b. T-Cells
- c. Ischemia
- d. None of the above

278. Amyloidosis in kidney most commonly involves:

- a. Glomerulus
- b. PCT
- c. DCT
- d. Loop of Henle

279. Most common paraneoplastic syndrome seen in:

Team Motivation FMGE Coaching Academy

Mock Test – 2

- a. Ectopic hormone syndrome
b. Trousseau phenomenon
c. Nonbacterial thrombotic endocarditis
d. Lambert Eaton Myasthenic Syndrome
280. Gate Keeper gene is:
a. Rb
b. p53
c. PTEN
d. APC
281. Type of necrosis seen in Aschoff bodies is:
a. Coagulative
b. Fibrinoid
c. Fatty
d. Caseous
282. Largest & Heaviest heart is seen in cardiomyopathy type:
a. Dilated
b. Restrictive
c. Hypertrophic
d. Fibrinous
283. All are true about α_1 antitrypsin deficiency except:
a. Increased risk of hepatocellular carcinoma
b. Most common genotype is PiMM
c. Causes Bronchial asthma
d. Presence of PAS positive & diastase resistant inclusion bodies
284. Dinitrophenol causes:
a. Inhibition of ATP synthase
b. Inhibition of electron transport
c. Uncoupling of oxidation and phosphorylation
d. Accumulation of ATP
285. One of the enzymes of the citric acid cycle, which is on the inner mitochondria membrane, also functions as complex II of the electron transport chain. This enzyme is also responsible for converting succinate to fumarate, producing FADH₂. The enzyme is
- a. Isocitrate dehydrogenase
b. A ketoglutarate dehydrogenase
c. Succinate dehydrogenase
d. Succinyl CoA synthase
286. A medical student developed hemolytic anemia after taking the oxidizing Antimalarial drug primaquine. This severe reaction is most likely due to
a. Glucose-6- phosphate dehydrogenase deficiency
b. Concomitant Scurvy
c. Diabetes
d. Glycogen phosphorylase deficiency
287. Features of Galactosemia include the following, except :
a. Cataract
b. Hepatosplenomegaly
c. Mental retardation
d. Hemolytic anemia
288. Which of the following statements about the role of glutamate dehydrogenase is correct
a. Glutamate dehydrogenase has an FAD prosthetic group.
b. Glutamate dehydrogenase has a pyridoxal phosphate cofactor.
c. Glutamate dehydrogenase transaminates glutamate producing α -ketoglutarate.
d. Glutamate dehydrogenase oxidatively deaminates glutamate producing α -ketoglutarate.
289. In hemoglobin biosynthetic pathway Lead is known to inhibit enzyme
a. d-ALA synthase
b. Uroporphyrinogen
c. d-ALA dehydratase
d. Heme synthase
290. When branched chain amino acids are deaminated in muscle, the ammonia produced is mostly:
a. Converted into arginine and released from the muscle

Team Motivation FMGE Coaching Academy

Mock Test - 2

- b. Converted into alanine and glutamine and released from the muscle
- c. Converted into urea and released from the muscle
- d. Used to synthesise purines and pyrimidines in the muscle
291. All the following are true about phenylketonuria except
- Deficiency of phenylalanine hydroxylase
 - Mental retardation
 - Increased urinary excretion of p-hydroxyphenyl pyruvic acid
 - Decrease serotonin formation
292. A fatty acid with 15 carbon atoms will undergo how many cycles of beta oxidation and produce how much acetyl CoA molecule?
- 5 cycle and 5 acetyl CoA molecule
 - 6 cycle and 6 acetyl CoA molecule
 - 7 cycle and 7 acetyl CoA molecule
 - 8 cycle and 8 acetyl CoA molecule
293. Which out of the followings is the ketone body is maximum in diabetic ketoacidosis?
- Acetone
 - Acetoacetate
 - Beta-hydroxy butyrate
 - Hydroxy Methyl glutarate
294. A person on a fat free carbohydrate rich diet continues to grow obese. Which of the following lipoproteins is likely to be elevated in his blood?
- Chylomicrons
 - VLDL
 - LDL
 - HDL
295. This lipoprotein removes cholesterol from the body
- HDL
 - VLDL
 - IDL
 - Chylomicrons
296. The minimum amount of energy needed for a process to occur is called the
- Minimal energy theory
 - Process energy
 - Kinetic energy
 - Activation energy
297. Long term broad spectrum antibiotics with reduced clotting time in localized areas are an indication of a deficiency in what?
- Vitamin C
 - Vitamin K
 - Cyanocobalamine (B12)
 - Thiamine (B1)
298. An enzyme that makes a double stranded DNA copy from a single stranded RNA template molecule is known as:
- DNA polymerase
 - RNA polymerase
 - Reverse transcriptase
 - Phosphokinase
299. The process involved in formation of protein from RNA is
- Replication
 - Translation
 - Transcription
 - Transformation
300. The following are false about DNA synthesis:
- It requires DNA polymerase
 - Reverse transcriptase enzymes are involved
 - Moves in a 5'---> 3' direction
 - Cytarabine inhibits DNA synthesis

Team Motivation FMGE Coaching Academy

Mock Test - 2

Team Motivation FMGE Coaching Academy											
Mock Test 2											
Q.	Ans	Q.	Ans	Q.	Ans	Q.	Ans	Q.	Ans	Q.	Ans
1	C	51	B	101	A	151	A	201	B	251	D
2	B	52	D	102	D	152	C	202	C	252	A
3	D	53	D	103	D	153	A	203	A	253	B
4	C	54	D	104	B	154	D	204	A	254	A
5	D	55	D	105	B	155	C	205	A	255	A
6	C	56	C	106	C	156	A	206	D	256	A
7	A	57	C	107	A	157	C	207	C	257	B
8	D	58	D	108	A	158	D	208	A	258	B
9	C	59	C	109	A	159	D	209	B	259	B
10	A	60	D	110	D	160	D	210	C	260	D
11	B	61	A	111	A	161	C	211	C	261	B
12	A	62	C	112	B	162	D	212	A	262	D
13	B	63	B	113	A	163	C	213	D	263	C
14	A	64	D	114	B	164	A	214	D	264	B
15	C	65	A	115	B	165	A	215	A	265	B
16	B	66	C	116	C	166	C	216	D	266	B
17	B	67	A	117	D	167	D	217	C	267	C
18	C	68	A	118	B	168	B	218	B	268	B
19	B	69	A	119	C	169	B	219	B	269	A
20	D	70	C	120	C	170	C	220	B	270	C
21	A	71	A	121	D	171	A	221	C	271	C
22	A	72	B	122	D	172	A	222	C	272	A
23	D	73	D	123	B	173	B	223	A	273	D
24	C	74	A	124	B	174	A	224	B	274	A
25	D	75	C	125	B	175	D	225	D	275	B
26	D	76	C	126	B	176	C	226	D	276	A
27	B	77	A	127	A	177	D	227	D	277	A
28	B	78	D	128	A	178	A	228	D	278	A
29	B	79	C	129	B	179	B	229	D	279	A
30	B	80	B	130	C	180	D	230	C	280	B
31	B	81	D	131	D	181	A	231	B	281	B
32	C	82	C	132	A	182	A	232	C	282	A
33	C	83	C	133	A	183	A	233	C	283	C
34	A	84	D	134	A	184	D	234	B	284	C
35	B	85	A	135	D	185	D	235	B	285	C
36	C	86	B	136	B	186	B	236	C	286	A
37	D	87	A	137	C	187	A	237	B	287	D
38	D	88	A	138	D	188	D	238	B	288	D
39	B	89	D	139	D	189	B	239	D	289	C
40	A	90	D	140	D	190	A	240	A	290	B
41	D	91	C	141	B	191	C	241	D	291	C
42	D	92	C	142	C	192	B	242	A	292	B
43	D	93	B	143	A	193	B	243	C	293	C
44	B	94	A	144	B	194	C	244	B	294	B
45	D	95	D	145	B	195	A	245	B	295	A
46	A	96	B	146	D	196	D	246	D	296	D
47	C	97	D	147	B	197	B	247	B	297	B
48	A	98	D	148	C	198	C	248	D	298	C
49	D	99	D	149	C	199	C	249	A	299	B
50	B	100	C	150	A	200	B	250	B	300	B