

Team Motivation FMGE Coaching Academy

Mock Test – 3

- A 30 yr old patient having a past history of seizures though well controlled is to be operated for a laproscopic surgery. Which of the following inhalational agent should be avoided
 - Nitrous oxide
 - Isoflurane
 - Enflurane
 - Desflurane
- Which of the following causes Tachycardia and Hypertension
 - Pancuronium
 - Atracurium
 - Vecuronium
 - Rocuronium
- A patient who is a chronic smoker is posted for varicose veins surgery and regarding smoking the following advice is given during PAC
 - Stop 4 - 6 weeks prior to surgery
 - Stop at least 2 weeks prior to surgery
 - Omit the day prior to surgery
 - Not needed to stop since nicotine levels will be maintained
- All the following decrease EtCO₂ except
 - Oesophageal intubation
 - Malignant Hyperthermia
 - Disconnection of tube from circuit
 - Cardiac arrest
- All the following agents increase Intra Cranial Tension (ICT) except
 - Halothane
 - Thiopentone
 - Ketamine
 - Suxamethonium
- 'Flare' in Triple response is mediated by
 - Axon reflex
 - Arteriolar dilation
 - Histamine release
 - Local hormones
- Membrane integrity of RBC is due to
 - G-protein
 - Hemoglobin
 - Spectrin
 - Ankyrin
- Skeletal muscle contraction is terminated by
 - Removal of calcium from the sarcoplasm
 - Ach is removed from the neuromuscular junction
 - Closure of nicotinic Ach receptors
 - Exhaustion of ATP
- Hypertonic urine is excreted due to absorption of water in
 - DCT
 - Ascending part of loop of Henle
 - Descending part of loop of Henle
 - Collecting ducts
- During aerobic exercise, blood remains relatively constant in which of the following organs
 - Brain
 - Heart
 - Kidneys
 - Skeletal muscle
- A small Ca²⁺ binding protein that modifies the activity of many enzymes and other proteins in response to changes of Ca²⁺ concentration is
 - Cycline
 - Calmodulin
 - Collagen
 - Kinesin
- Positive feedback action of estrogen for inducing LH surge is associated with which of the following steroid hormone ratios in the peripheral circulation
 - High estrogen : High progesterone
 - High estrogen : Low progesterone
 - Low estrogen : High progesterone
 - Low estrogen : Low progesterone
- ST segment elevation is seen in
 - Prinzmetal's angina
 - Acute pericarditis
 - Acute MI
 - All of the above
- Which is responsible for respiratory drive
 - O₂
 - CO
 - CO₂
 - Bicarbonate ions
- In cushing syndrome, the following features are found except
 - Hypotension
 - Rapidly increasing adiposity

Team Motivation FMGE Coaching Academy

Mock Test – 3

- c. Polycythaemia
d. Impotence with atrophy of testis
16. During binding of the 4 molecules of O₂ by the Hb, the affinity for the binding of one of the following is the greatest
- First molecule
 - Second molecule
 - Third molecule
 - Fourth molecule
17. Thalamus is a major sensory relay station for all except
- Taste
 - Hearing
 - Vision
 - Smell
18. A travelling nerve impulse does not depolarize the area immediately behind it, because
- It is hyperpolarized
 - It is not self propagating
 - The condition is always orthodromic
 - It is refractory
19. The inability to perceive the texture & shape of an object occurs in lesion of
- Lateral spino-thalamic tract
 - Nucleus gracilis
 - Spino reticular tract
 - Nucleus cuneatus
20. Which inhibits gastrin secretion
- Secretin
 - High gastric pH
 - Insulin
 - Calcium
21. CSF is principally produced by
- Choroid plexus
 - Arachnoid granulation
 - Floor of fourth ventricle
 - Periaqueductal grey matter
22. Resting membrane potential of nerve is close to the isoelectric potential of
- Sodium ion
 - Potassium ion
 - Chloride ion
 - Calcium ion
23. Thanatology is the study of:
- Police system.
 - Death
 - Finger prints
 - Thermal deaths
24. Radiological signs of fetal death includes all except
- Overlapping of skull bones (Spaulding's sign)
 - Hyperextension of spine
 - Collapse of spinal column
 - Gas in aorta
25. Testamentary capacity means:
- Mental ability to give evidence in court of law
 - Mental ability to file a legal case
 - Mental ability to make a contract
 - Mental ability to make a valid will
26. Tache noire refers to
- Postmortem staining
 - Flaccidity of eyeball
 - Wrinkled dusty sclera
 - Maggot growth
27. One of the following is a sure sign of rape:
- Ruptured hymen
 - Presence of semen in the posterior fornix in a 20 years old girl
 - Presence of semen in the posterior fornix in a 14 years old girl
 - Presence of semen in the posterior fornix in 16 years old married girl
28. A cognisable offence signifies:
- Punishable with life imprisonment.
 - Arrest without warrant.
 - Arrest on the issue of warrant by magistrate
 - punishable with imprisonment upto 7years & fine
29. Pyromania is a type of:
- fear from height
 - setting fire
 - fear in close places
 - Stealing things of very less value
30. Tactile hallucination is seen in chronic addiction with:
- Cannabis
 - cocaine
 - Opium
 - LSD

Team Motivation FMGE Coaching Academy

Mock Test – 3

31. Ballooning of lung is seen in :
- Wet drowning
 - Dry drowning
 - Immersion syndrome
 - Secondary drowning
32. Oral testimony is exempted in the following conditions except:
- Dying declaration
 - Chemical examiner's report
 - Medical evidence given by a lower court
 - Medical evidence of injury as a witness.
33. Which of the following statements about the citric acid cycle is correct?
- Oxygen is used to oxidise the acetyl group carbons of acetyl-CoA in the citric acid cycle.
 - Three molecules of NADH and one molecule of FADH₂ are produced in one turn of the citric acid cycle.
 - Oxygen is not used in the citric acid cycle, so the cycle can occur in anaerobic conditions.
 - The citric acid cycle produces the water that is formed during the complete oxidation of glucose.
34. A eats a very poor diet and consumes two bottles of vodka a day. He is admitted to a hospital in coma. He is hyperventilating and has low blood pressure and high cardiac output. A chest x-ray shows that his heart is enlarged. Laboratory tests show that he is suffering from thiamin (vitaminB1) deficiency. Which of the following enzymes is most likely to be affected?
- Lactate dehydrogenase
 - Pyruvate carboxylase
 - Pyruvate decarboxylase
 - Pyruvate dehydrogenase
35. False about Epinephrine and glucagon effects on glycogen metabolism?
- The net synthesis of glycogen is decreased
 - Glycogen phosphorylase is activated, whereas glycogen synthase is inactivated
 - Both are expressed in liver & muscles
 - The net breakdown of glycogen is increased
36. Which of the following enzymes is responsible for maintaining blood glucose levels by releasing glucose from its storage form in the liver?
- Acetyl-CoA carboxylase
 - Glucose 6-phosphate dehydrogenase
 - Glycogen phosphorylase
 - Glycogen synthase
37. The first line of defence in brain in conditions of hyperammonemia is-
- Urea formation
 - Glutamine synthesis
 - Glutamate synthesis
 - Asparagine formation
38. False statement about hemoglobin structure
- Hb has 4 polypeptide
 - Iron is present in ferrous state
 - Hb structurally similar to myoglobin
 - Ferrous ions are in porphyrin rings
39. In a patient suffering from Cystinuria, which out of the following amino acids is not seen in urine of affected patients?
- Arginine
 - Methionine
 - Lysine
 - Ornithine
40. A child was brought to paediatric OPD with complaint of passage of black colored urine. A disorder of Phenylalanine metabolism was diagnosed. A low phenylalanine diet and a supplementation of vitamin C were recommended. Which enzyme defect is expected in this child?
- Phenyl alanine hydroxylase
 - Tyrosine transaminase
 - Homogentisic acid oxidase
 - Hydrolase
41. Deterioration of food (rancidity) is due to presence of
- Cholesterol

Team Motivation FMGE Coaching Academy

Mock Test – 3

- b. Vitamin E
c. Peroxidation of lipids
d. Phenolic compounds
42. Acetoacetyl-CoA condenses with one more molecule of acetyl-CoA to form
a. Mevalonate
b. Acetoacetate
c. Fi-Hydroxybutyrate
d. 3-Hydroxy 3-methyl-glutaryl-CoA
43. Δ^9 indicates a double bond between carbon atoms of the fatty acids:
a. 8 and 9
b. 9 and 10
c. 9 and 11
d. 9 and 12
44. Arachidonic acid is a fatty acid of which type
a. 20: ω 6
b. 20: ω 4
c. 8: ω 6
d. 10: ω 6
45. Competitive inhibitors stop an enzyme from working by
a. Changing the shape of the enzyme
b. Merging with the substrate instead
c. Blocking the active site of the enzyme
d. Combining with the product of the reaction
46. Vitamin B12 and folic acid supplementation in megaloblastic anemia leads to the improvement of anemia due to:
a. Increased DNA synthesis in bone marrow
b. Increased hemoglobin production
c. Erythroid hyperplasia
d. Increased iron absorption
47. An increased melting temperature of duplex DNA results from a high content of
a. Adenine + Guanine
b. Thymine + Cytosine
c. Cytosine + Guanine
d. Cytosine + Adenine
48. In purine biosynthesis carbon atoms at 4 and 5 position and N at 7 positions are contributed by
a. Glycine
b. Glutamine
c. Alanine
d. Threonine
49. Which of the following is true for ALL nucleotides?
a. They contain ribose, a phosphate and a nitrogenous base
b. They are double-stranded and anti-parallel
c. They contain a pentose, a phosphate and a nitrogenous base
d. They contain deoxyribose, a phosphate and a nitrogenous base
50. *Tinea versicolor* is caused by:
a. *E. flaccosum*
b. *Malassezia furfur*
c. *T. robrum*
d. *T. schonleini*
51. The burrows of scabies are seen in:-
a. Stratum Gerinatum
b. Stratum Corneum
c. Malphigean layer
d. Dermis
52. Painful Lymphadenopathy is seen in:-
a. Donavanosis
b. Syphilis
c. Chancroid
d. Gonorrhoea
53. Ash leaf macule is seen in:
a. Tuberous Sclerosis
b. Neurofibromatosis
c. Lymphangioma
d. None
54. PUVA therapy is used in:
a. Psoriasis
b. Lichen planus
c. Melesma
d. Freckles
55. Time of collection of blood is important in
a. Microfilaria
b. Malaria parasite
c. Leishmania
d. Babesia
56. *Schistosoma japonicum* resides in
a. Sup. Mesenteric vein
b. Inf. Mesenteric vein
c. Small intestine
d. Gall bladder
57. Which of the following is not true for prokaryotic organism?

Team Motivation FMGE Coaching Academy

Mock Test – 3

- a. Nucleus is not bounded by nuclear membrane
- b. Chromosomes does not contain histones
- c. 80S ribosomes are distributed in cytoplasm
- d. Cell wall contains peptidoglycan as one of the major component
58. The correct term for the transfer of genetic material between bacteria in direct physical contact is
- a. Conjugation
- b. Transformation
- c. Replication
- d. Transduction
59. The agent responsible for causing mad cow disease is thought to be a
- a. Fungus
- b. Protozoan
- c. Prion
- d. Virus
60. Which of the following is a drug that interferes with the process of DNA production in the virus that causes genital herpes?
- a. Erythromycin
- b. Vancomycin
- c. Amantadine
- d. Acyclovir
61. Tinea versicolor is caused by
- a. Candida albicans
- b. Malassezia furfur
- c. Aspergillus niger
- d. None of these
62. Viruses which have teratogenic property are
- a. Herpes simplex virus
- b. Cytomegalovirus
- c. Rubella virus
- d. All of these
63. Prausnitz Kustner reaction is generated by
- a. IgA
- b. IgE
- c. IgG
- d. IgD
64. A person from village is complaining of development of pustules of the leg. Culture was done which showed gram positive cocci in chains which were alpha hemolytic colonies and catalase negative, identified as group a streptococci. Which of the following tests will best identify the organism?
- a. Bile solubility
- b. Optochin sensitivity
- c. Bacitracin sensitivity
- d. Novobiocin sensitivity
65. Reverse transcriptase polymerase chain reaction can aid in diagnosis of all of the following viral infection except
- a. Adenovirus
- b. Astrovirus
- c. Rotavirus
- d. Poliovirus
66. A neonate develops encephalitis without any skin lesions most probable causative organism is
- a. HSV I
- b. HSV II
- c. Meningococci
- d. Haemophilus
67. EBV belongs to
- a. Retrovirus
- b. Herpes virus
- c. RNA virus
- d. Pox virus
68. Methotrexate is antagonist of
- a. Thiamine
- b. Riboflavin
- c. Folic acid
- d. Niacin
69. Aspirin inhibits
- a. Lipoxygenase
- b. Prostacyclin synthesis
- c. Cyclooxygenase
- d. Phospholipase
70. Immediate t/t of anaphylaxis
- a. Hydrocortisone
- b. Atropine
- c. Adrenaline
- d. Diphenhydramine
71. Drug for cerebral malaria
- a. Metakalmin
- b. Quinine
- c. Chloroquine

Team Motivation FMGE Coaching Academy

Mock Test – 3

- d. Primaquine
72. Primaquine can cause hemolysis in case of deficiency of
- Glucose-6-phosphate dehydrogenase
 - Galactose-6-phosphate dehydrogenase
 - Methemoglobin
 - Thiamine
73. Digoxin act on heart by
- Dec. oreload
 - Incre. force of contraction
 - Dec. after load
 - Dec. hert rate
74. All follo. antibacterial agent inhibit bacterial cellwall except
- Penicillin
 - Isoniazid
 - Cephlosporins
 - Streptogramins
75. Captopril exert antihypertensive effect by
- Inhibit liver to syn thesis angiotensinogen
 - Inhibit conversion of AT I to AT II
 - Dec. renin production
 - Inhibit conversion of angiotensinogen to AT I
76. DOC for Absence seizure
- Carbamazepine
 - Ethosuximide
 - Phenobarbitone
 - Phenytoin
77. OK 432 or Picibanil is
- Sclerosant used to treat cystic hygroma
 - Immunosuppressive agent used after transplantation
 - Specific agent for interstitial ds of lung
 - Is newr t/t for variceal bleeding
78. most effective hormonal means of emergency contraception consist of
- Estrone
 - Estriol
 - Levonorgestrol
 - Testosterone
79. Occurence of Neural tube defect can be reduced by optimizing intake of
- Vit A
 - Ascobic acid
 - Vit E
 - Folic acid
80. Anaesthetic agent that is C/I in presence of jaundice
- Halothane
 - Ether
 - Gallamine
 - Nitous oxide
81. Drug of choice for cycling Manic depressive psychosis is
- Lithium
 - Carbamazepine
 - Sodium valproate
 - Haloperidol
82. A two yrs old girl child is brought to the out patient with features of hand wringing ,stereotype movements,impaired language and communication development, breath holding spells,poor social skills and deceleration of head growth after six months of age.the most likely diagnosis is
- Asperger ssyndrome
 - Rett's syndrome
 - Fragile x syndrome
 - Cottard syndrome
83. La belle indifference is seen in
- Conversion reaction
 - Schizophrenia
 - Mania
 - Depression
84. Confabulation is typically seen in
- Alcoholism
 - Depression
 - Mania
 - Delirium
85. NREM sleep is asso .with
- Frequent dreaming
 - Night terrors
 - Inc. BP
 - Penile erection
86. A student wants to study the effect of changing the amount of salt in the diet with blood pressure. In this experiment, what kind of variable is dietary salt?
- Random
 - Fixed
 - Dependent

Team Motivation FMGE Coaching Academy

Mock Test - 3

- d. Independent
87. A pathologist measures the cholesterol levels in three groups. What statistical test is used to compare the mean cholesterol level of these three groups?
- Correlation
 - Chi-square test
 - ANOVA
 - T-test
88. A group of 100 patients undergo a blood sugar test where the mean is 200 & the standard deviation is 20. What is the 95% confidence interval of the mean?
- 200 ± 1
 - 200 ± 2
 - 200 ± 3
 - 200 ± 4
89. Which one better correlates with Sullivan's index
- Infant mortality rate
 - Life expectancy at the age of one
 - Per capita income
 - Numbers of years lived without disability
90. Physical therapy for stroke is
- Primordial prevention
 - Primary prevention
 - Secondary prevention
 - Tertiary prevention
91. ICD-10 stands for
- International classification of death-revision10
 - International classification of disability-revision10
 - International classification of disease-revision10
 - International classification of drugs-revision10
92. A person with visual acuity of $< 6/18$ qualifies for
- Disease
 - Impairment
 - Disability
 - Handicap
93. Cohort study is associated with
- Prevalence
 - Odd's ratio
 - Relative risk
 - All
94. For case control study are true except
- Possibility of bias
 - Odd's ratio can be derived
 - Relatively inexpensive
 - Attributable risk can be known
95. Storage temperature of vaccine is
- 4 to 0°C
 - 0°C to 4°C
 - 2°C to +8°C
 - +2°C to +8°C
96. Sputum can be disinfected by all except
- Autoclaving
 - Boiling
 - Cresol
 - Chlorhexidine
97. Phase 4 clinical trial is carried out
- For drugs used in paediatric patients
 - For drugs used in rare diseases
 - After a drug is marketed
 - Before the marketing approval of a drug
98. Which one can be eliminated by double blinding
- Berksonian bias
 - Recall bias
 - Interviewers bias
 - Selection bias
99. True regarding elimination of neonatal tetanus in village
- Rate more than 1/1000 live births
 - Attended deliveries less than 50%
 - Attended deliveries more than 50%
 - Rate less than 0.1/1000 live births
100. For post-exposure prophylaxis, dose of human rabies immunoglobulin is
- 10 IU/kg
 - 20 IU/kg
 - 30 IU/kg
 - 40 IU/kg
101. During epidemic of hepatitis E, fatality is maximum in
- Infants
 - Adolescents
 - Malnourished male
 - Pregnant women
102. In HIV, window period is time period between
- Infection & onset of symptoms
 - Infection & detection of antigen
 - Infection & detection of antibody
 - Infection & fall in CD4
103. GATHER Approach is useful for
- Chlorination of water
 - Counselling
 - Refuse disposal
 - Data analysis
104. Not included in Primary health care
- Equitable distribution
 - Intersectoral coordination
 - Appropriate technology
 - Treatment by doctors

Team Motivation FMGE Coaching Academy

Mock Test - 3

105. Calories in 100 ml of breast milk is
- 45 Kcal
 - 65 Kcal
 - 85 Kcal
 - 105 Kcal
106. Soiling index is used in
- Air pollution
 - Water pollution
 - Soil pollution
 - Sound pollution
107. Best method for prevention of infection by medical professionals in a hospital setup is
- Hand washing
 - Antibiotic
 - Sterilization
 - Use of mask
108. Disinfection of water by routine chlorination can be classified as
- Concurrent disinfection
 - Pre-current disinfection
 - Sterilization
 - Terminal
109. The first step in conducting an epidemic investigation is:
- Determine the number of cases
 - Determine the population at risk
 - Verifying the diagnosis
 - Calculating the incubation period
110. ROC curve is usually drawn between
- Sensitivity & (1-specificity)
 - (1-sensitivity) & specificity
 - Sensitivity and specificity
 - (1-sensitivity) & (1-specificity)
111. 'Rule of Halves' is seen in
- Accidents and Injuries
 - Blindness
 - CHD
 - Hypertension
112. Spot map in epidemiological studies refer to variation in distribution of a disease at:
- International level
 - National level
 - Rural-urban level
 - Local level
113. Sampling technique which selects every fifth person from a community is called:
- Simple random sampling
 - Systematic random sampling
 - Stratified sampling
 - Cluster sampling
114. Theme for World health Day 2015 is
- Food Safety
 - Food security
 - Vector Borne Diseases
 - Antimicrobial resistance
115. Mission Indradhanush is launched by
- Ministry of Health and family welfare.
 - Ministry of Women and Child Development
 - Ministry of Social welfare
 - Ministry of Education
116. which of the following is not a correct statement regarding to raynaud's disease
- it is idiopathic
 - it commonly affects women
 - exposure to cold precipitate vasoconstriction
 - the lower extremity involvement is common
117. which of the following statement is correct in case of squamous cell carcinoma of lip
- lymph node metastasis occur early
 - more than 90% cases occur in upper lip
 - lesion often arises in the areas of persistent hyperkeratosis
 - radiotherapy is considered inappropriate treatment for these lesions
118. which of the following statement is not correct for locally advanced carcinoma of breast
- it constitutes the bulk of patients of carcinoma breast in india
 - patients are staged as T3 or T4, N2 or N3 without distant metastasis
 - neoadjuvant chemotherapy downgrades the disease
 - radical mastectomy is the treatment of choice
119. which of the following is not a common feature of bile duct stone
- obstructive jaundice
 - itching
 - clay coloured stools
 - distended gall bladder
120. consider the following with reference to oesophageal variceal bleed in portal hypertension
- infusion of vasopressin
 - general resuscitation
 - devascularisation procedure
 - endoscopic sclerotherapy
- what is the appropriate sequence in the line of management
- 1, 4, 2, 3
 - 2, 1, 4, 3
 - 4, 2, 1, 3
 - 3, 2, 1, 4

Team Motivation FMGE Coaching Academy

Mock Test - 3

121. a 50 yr old diabetic patient with asymptomatic gall stone (>3cm) will be best treated by
- early surgery
 - bile salt treatment
 - ESWL
 - Waiting till it become symptomatic
122. which of the following is not an indication for surgical intervention in acute pancreatitis
- acute fluid collection
 - pancreatic necrosis
 - pancreatic abscess
 - diagnostic dilemma
123. the following disorders are high predisposing conditions for carcinoma of colon except
- ulcerative colitis
 - villous adenoma
 - familial polyposis coli
 - peutz jeghers syndrome
124. the following statement are correct about burst abdomen (abdominal dehiscence) except
- peak incidence between 6th and 8th post operative day
 - manage with nasogastric aspiration and intravenous fluid
 - cover the wound with sterile towel and perform emergency surgery
 - second dehiscence is very common
125. a patient presents to the emergency department with pain and distension of abdomen and absolute constipation, what is the investigation you would like to order
- plain x-ray abdomen
 - ultrasonography
 - barium meal follow through
 - colonoscopy
126. motility disorders of oesophagus are best diagnosed by
- barium meal
 - manometry
 - radiography
 - endoscopy
127. consider the following statements about systemic inflammatory response syndrome
- temperature either above 38 or below 36 degree centigrade
 - heart rate less than 80 per minute
 - tachypnoea > 20/min
 - leucocyte count < 4000/mm³
- which of the statements given above are correct
- 1, 2 and 3
 - 1 and 2 only
 - 2 and 3 only
 - 1, 3 and 4
128. with reference to ESWL consider the following statements
- it is the treatment of choice for stone larger than 2 cm
 - it is contraindicated in pregnancy
 - it is treatment of choice for lower pole stone
 - it is associated with steinstrass phenomenon
- which of the statements given above are correct
- 1, 2 and 3 only
 - 2 and 4 only
 - 3 and 4 only
 - 1, 2, 3 and 4
129. the typical appearance of 'spider leg' on excretory urography is seen in
- hydronephrosis
 - polycystic kidney disease
 - medullary sponge kidney
 - renal cell carcinoma
130. pneumatosis intestinalis on a plain abdominal radiograph is seen in
- congenital atresia of bowel
 - meconium ileus
 - volvulus neonatorum
 - necrotising enterocolitis
131. with reference to FFP (fresh frozen plasma) which one the following statement is not correct
- it is used as volume expander
 - it is stored at -40 deg centigrade
 - it is a source of coagulation factors
 - it is given in a dose of 12-15 ml/kg body wt
132. in primary hyperparathyroidism which one of the following is most common finding
- solitary adenoma
 - double adenoma
 - hyperplasia of two or more glands
 - carcinoma
133. crush syndrome is managed by which of the following
- 20% dextrose
 - Hydrocortisone
 - Maintaining high urine output
 - Acidification of urine
134. high or low fistula in ano is termed according to its internal opening present with reference to
- anal canal
 - dentate line
 - anorectal ring
 - sacral promontary
135. which of the following types of stomach cancer carries the best prognosis

Team Motivation FMGE Coaching Academy

Mock Test – 3

- a. superficial spreading type
b. ulcerative type
c. linitis plastica type
d. polypoidal type
136. what is the most common malignancy affecting spleen
a. angiosarcoma
b. hamartoma
c. secondaries
d. lymphoma
137. cocket and dodd's operation is performed for which of the following
a. SFJ incompetence
b. Perforator incompetence
c. DVT
d. Diabetic foot
138. which of the surgical procedure is considered to have a clean – contaminated wound
a. elective open cholecystectomy for cholelithiasis
b. herniorrhaphy with mesh repair
c. lumpectomy with axillary node dissection
d. appendicectomy with walled off abscess
139. with reference to varicocele which of the following is not correct
a. varicosity of cremastic veins
b. left side is affected mainly
c. feels like bag of worms
d. may lead to infertility
140. Steering wheel injury on chest of a young man reveals multiple fractures of ribs and paradoxical movement with severe respiratory distress. X ray shows pulmonary contusion on rt side without pneumothorax or hemothorax. What is the initial treatment of choice
a. immediate internal fixation
b. endotracheal intubation and mechanical ventilation
c. epidural analgesia and oxygen therapy
d. stabilization with towel clips
141. with reference to duodenal ulcers, consider the following statements
1. they occur most often in second part of duodenum
2. infection with h.pylori and NSAIDs induced injury account for majority of cases
3. malignant duodenal ulcers are extremely rare
4. eradication of h. pylori has greatly reduced the recurrence rate in duodenal ulcers
which of the above statements are true
a. 1, 2 and 3 only
b. 2, 3 and 4 only
c. 1 and 4 only
d. 1, 2, 3 and 4
142. the following operative procedure can result in neurogenic voiding dysfunction except
a. radical hysterectomy
b. ureterolithotomy
c. abdominoperineal resection
d. retroperitoneal lymph node dissection
143. malignant lymphoma of thyroid is associated with which one of the following
a. riedel thyroiditis
b. hashimoto's thyroiditis
c. de quervain's thyroiditis
d. infective thyroiditis
144. which of the following is the most common complication of pancreas divisum
a. obstructive jaundice
b. duodenal obstruction
c. recurrent acute pancreatitis
d. peptic ulcer
145. examination of a patient with head injury reveals that he opens eye on painful stimuli, is confused and localise painful stimuli correctly. What is his Glasgow coma scale
a. E3V3M3
b. E2V3M4
c. E2V4M5
d. E3V3M4
146. which of the following procedure is contraindicated in treatment of hypospadias
a. chordee correction
b. circumcision
c. urethroplasty
d. meatotomy
147. urine examination of a patient with struvite renal calculi may reveal following except
a. microscopic hematuria
b. crystalluria
c. bacteriuria
d. urine ph < 5
148. The plane of reference that divides the body into anterior & posterior portion is:
a. Sagittal
b. Frontal
c. Cross-Sectional
d. Oblique
149. A typical spinal nerve is a:
a. Sensory nerve
b. Motor nerve

Team Motivation FMGE Coaching Academy

Mock Test – 3

- c. Sympathetic nerve
d. Mixed nerve
150. Which example is false regarding the transitional epithelium:
a. Collecting duct
b. Renal pelvis
c. Ureter
d. Proximal part of urethra
151. The bipolar neurons are found in:
a. Cerebral cortex
b. Cerebellar cortex
c. Olfactory epithelium
d. Dorsal root ganglion
152. The red nucleus is a feature of:
a. Cerebrum
b. Mid brain
c. Thalamus
d. Cerebellum
153. The axillary artery in its first part is related posteriorly to:
a. Posterior cord
b. Medial cord
c. Lateral cord
d. Axillary vein
154. A female patient was operated for removed of the breast on account of cancer. After the operation she developed “winging of scapula”. This could be due to injury to the:
a. Thoracodorsal nerve
b. Long thoracic nerve
c. Radial nerve
d. Subscapular nerve
155. Pisiform is considered as sesamoid bone in the tendon of:
a. Biceps femoris
b. Quadriceps femoris
c. Gastrocnemius
d. Adductor longus
156. The largest bursa in human body is:
a. Subacromid bursa
b. Prepatellar bursa
c. Trochanteric bursa
d. Infrapatellar bursa
157. Anterior choroidal artery is a branch of:
a. Anterior cerebral artery
b. Middle cerebral artery
c. Posterior cerebral artery
d. Internal carotid artery
158. Injury of ulnar nerve proximal to wrist causes paralysis of all except:
a. Palmar interossei
b. Dorsal interossei
c. Opponenspollicis
d. Adductor pollicis
159. Which is the type of joint seen in the growth plate:
a. Primary cartilaginous
b. Secondary cartilaginous
c. Syndesmosis
d. Plane joint
160. The Couinaud’s segmental nomenclature is based on the position of the:
a. Hepatic vein & portal vein
b. Hepatic vein & biliary duct
c. Portal vein & biliary duct
d. Portal vein & hepatic artery
161. The following statements concerning chorda tympani nerve are true except that it:
a. Carries secretomotor fibres to submandibular gland
b. Join lingual nerve in infratemporal fossa
c. Is a branch of facial nerve
d. Contains postganglionic parasympathetic fibres
162. The paralysis of 3rd, 4th & 6th cranial nerve with the involvement of ophthalmic division of trigeminal localize the lesion to:
a. Cavernous sinus
b. Apex of orbit
c. Brainstem
d. Base of skull
163. All of the following are the components of the white pulp of spleen, except:
a. Periarteriolar lymphoid sheath
b. B cells
c. Antigen presenting cells
d. Vascular sinus
164. The vertebral artery traverses all of the following except:
a. Foramen magnum

Team Motivation FMGE Coaching Academy

Mock Test – 3

- b. Subarachnoid space
c. Intervertebral foramen
d. Foramen transversarium
165. Maximum growth of head occur in postnatal life in:
a. 0 – 6 months
b. 6 – 12 months
c. 1 – 2 years
d. > 5 years
166. A girl can walk upstairs, alternating feet and make towers of 8 cubes. She refers to herself by pronoun “I”, knows name but not her age and gender. The most likely chronological age?
a. 24 months
b. 30 months
c. 36 months
d. 42 months
167. Consider the following milestone ability to: -
1. Crawl
2. Indicate desire by pointing
3. Make tower of 4 cubes
4. Draw a line with crayon
Which of the following would expect of a 15 month baby?
a. 1 and 3
b. 2 and 4
c. 1, 2, 4
d. 1, 2, 3, 4
168. Following is delayed milestone development:
a. Head elevation at 12 weeks
b. Pincer grasp at 9 month
c. Bisyllable at 12 month
d. Stand with support at 10 month
169. Bone age is normal in:
a. Genetic short stature
b. Hypopituitarism
c. Hypothyroidism
d. Emotional deprivation
170. Kwashiorkor is diagnosed in growth retarded child along with:
a. Edema and mental retardation
b. Hypopigmentation and anemia
c. Edema and hypopigmentation
d. Hepatomegaly and anemia
171. A child suffering from severe PEM. Calories to be given per Kg body weight to regain weight is:
a. 100 kcal
b. 150 kcal
c. 200 kcal
d. 250 kcal
172. Bag and mask ventilation in New born resuscitation is contraindicated in:
a. Diaphragmatic hernia
b. Pulmonary hypoplasia
c. Trached-oesophageal fistula
d. Laryngomalacia
173. Mongolian spot over buttocks and back are seen in:
a. Mongols
b. Purpura
c. Scabies
d. Normal
174. A mother is preparing to breastfeed her infant, it would be of value to her, if she were acquainted with:
a. Moro reflex
b. Rooting reflex
c. Grasp reflex
d. Cough reflex
175. Painless effusions in joints in congenital syphilis is called:
a. Clutton’s joints
b. Bantons joints
c. Charcots joint
d. Synovitis
176. Length of feeding tube to be inserted for transpyloric feeding is measured from tip of:
a. Nose to umbilicus
b. Ear lobe to umbilicus
c. Nose to knee
d. Ear lobe to knee joint
177. Rubella syndrome does not cause:
a. Congenital heart disease
b. LBW
c. Corneal opacities
d. Maculopapular rash
178. Best prognosis in neonatal seizures is due to which of the following causes:
a. Hypomagnesemia

Team Motivation FMGE Coaching Academy

Mock Test – 3

- b. Hyponatremia
c. Hypocalcemia
d. Hypoglycemia
179. Cyanotic heart disease with decreased pulmonary blood flow is seen in:
a. Transposition of great vessels
b. Hypoplastic left heart disease
c. Tricuspid atresia
d. Atrial septal defect
180. Commonest site of Charcot's Arthropathy is
a. Ankle and foot joint
b. Knee
c. Hip
d. Shoulder
181. Painless symmetrical involvement of both knees in congenital syphilis is known as:
a. Clutton's joint
b. Charcot's joint
c. Septic joint
d. None of the above
182. Histology of the Ewing's sarcoma is characterized by the presence of all except:
a. CD99
b. Glycogen
c. Reticulin
d. Pseudo rosettes
183. Non-union following a pediatric lateral condyle fracture has been associated with which of the following?
a. Median nerve palsy
b. Radial nerve palsy
c. Ulnar nerve palsy
d. Cubitus varus
184. An otherwise healthy 37-year-old man has had bilateral posterior heel pain for the past year. Examination reveals fullness, warmth, and tenderness over the posterior aspect of the heels. Radiographs are normal. Laboratory studies show a normal CBC and an erythrocyte sedimentation rate of 50 mm/h (normal up to 20 mm/h), and an HLA-B27 is positive. What is the most likely diagnosis?
- a. Rheumatoid arthritis
b. Ankylosing spondylitis
c. Lupus erythematosus
d. Reiter syndrome
185. Which of the following is the least likely radiological finding if an acute pulmonary embolus is present?
a. Central pulmonary arterial enlargement
b. Hampton's hump
c. Small pleural effusion
d. Westermark's sign
186. Which one of the following features are you most likely to see in a 3-month-old infant with Transposition of Great Vessels?
a. Boot-shaped heart.
b. Flask-shaped heart.
c. Egg on side appearance.
d. Rib notching.
187. Which of these is the screening modality of choice for DCIS (Ductal carcinoma in-situ) of breast?
a. Mammography
b. Ultrasonography
c. MRI
d. PET Scan
188. Dense 'popcorn' calcification on mammography is seen in -
a. Fat necrosis.
b. Fibroadenoma.
c. Hamartoma.
d. Galactocele.
189. In a 40-year-old woman complaining of ankle pain, radiographs reveal sclerosis and collapse of the navicular bone. What is the most likely diagnosis?
a. Freiberg's disease.
b. Kienboeck's disease.
c. Kohler's disease.
d. Sever's disease.
190. Identify the diagnosis-



Mock Test – 3

- a. Normal Chest X Ray
- b. Metastasis
- c. Miliary tuberculosis
- d. Consolidation

191. Identify the diagnosis on this IVP image-



- a. Bifid ureter
- b. Left ureteric calculus with hydronephrosis
- c. Ectopic kidney
- d. Horse-shoe shaped kidneys

192. The X Ray here is suggestive of-

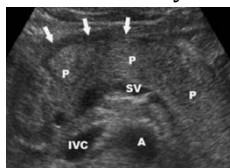


- a. Intestinal obstruction
- b. Intestinal perforation
- c. Intussusceptions
- d. Sigmoid volvulus

193. A barium swallow examination demonstrates a markedly dilated oesophagus with smooth narrowing of the distal oesophagus giving the appearance of a bird's beak. What is the most likely diagnosis?

- a. Oesophageal achalasia.
- b. Paraoesophageal hiatus hernia.
- c. Peptic oesophageal stricture.
- d. Carcinoma of oesophagus.

194. Identify the diagnosis-



- a. Chronic pancreatitis
- b. Acute pancreatitis
- c. Pancreatic carcinoma
- d. Pancreatic pseudocyst.

195. Example of pathologic hyperplasia is:

- a. Female breast at puberty
- b. Benign prostatic hyperplasia
- c. Increase in left ventricular size due to hypertension
- d. Bone marrow hyperplasia in hemolysis

196. All are the nuclear changes seen in necrosis except:

- a. Karyolysis
- b. Pyknosis
- c. Karyorrhexis
- d. None of the above

197. Programmed necrosis is the term used for:

- a. Necroptosis
- b. Pyroptosis
- c. Autophagy
- d. Apoptosis

198. In tattooing pigments are phagocytosed by macrophages. These are present in:

- a. Dermis
- b. Lower part of epidermis
- c. Upper part of epidermis
- d. Mid part of epidermis

199. All are the action of platelet activity factor except:

- a. Platelet aggregation
- b. Vasoconstriction
- c. Chemotaxis
- d. Bronchoconstriction

200. Proliferation of endothelial cells is done by:

- a. Fibroblast growth factor – 2
- b. Angiopoietins 1
- c. Transforming growth factor β
- d. Metalloproteinases

201. Nutmeg liver is the appearance of liver due to:

- a. Left ventricular failure
- b. Right ventricular failure
- c. Portal vein obstruction
- d. All of the above

202. Glanzmann thromboasthenia is due to deficiency of:

- a. GpIa/IIa
- b. GpIIb/IIIa
- c. GpIb/IX
- d. Thromboxane A₂

Team Motivation FMGE Coaching Academy

Mock Test – 3

203. All are the examples of Type II hypersensitivity except:
- Pemphigus vulgaris
 - Myasthenia gravis
 - Polyarteritis nodosa
 - Graves' disease
204. Most common form of glomerulonephritis seen in systemic lupus erythematosus is:
- Minimal mesangial lupus nephritis
 - Mesangial proliferative lupus nephritis
 - Diffuse lupus nephritis
 - Membranous lupus nephritis
205. In senile cerebral amyloidosis there is accumulation of:
- AL
 - A β
 - AA
 - ATTR
206. Lung carcinoma can be due to all of the following except:
- Benzene
 - Asbestos
 - Arsenic
 - Nickel
207. Expression of ERBB1 is seen in carcinoma lung except:
- Squamous cell
 - Adenocarcinoma
 - Small cell
 - Large cell
208. Till what time of pregnancy uterus remains a pelvic organ?
- 8 weeks
 - 12 weeks
 - 16 weeks
 - 20 weeks
209. Ovulation is due to surge of:
- FSH
 - LH
 - Prolactin
 - TSH
210. All of the following are indicator of ovulation except:
- Increase in cervical mucus
 - Abdominal cramps
 - LH surge
 - Fall in body temperature
211. Which of the following is the cause of amenorrhoea in a lactating mother:
- Increase release of LH
 - Increase GnRH secretion
 - Hyperestrogenic state
 - Increased prolactin level
212. Best time of diagnosing fetal abnormalities by USG:
- 6 – 12 weeks of pregnancy
 - 13 – 19 weeks of pregnancy
 - 20 – 26 weeks of pregnancy
 - 27 – 32 weeks of pregnancy
213. In case of Hydratiform mole with age 40 years & complete family, the treatment of choice is:
- Suction evacuation
 - D & C
 - Total hysterectomy
 - Panhysterectomy
214. Normal pressure of manual vacuum aspiration performed for MTP is:
- 60 – 70 mmHg
 - 50 – 60 mmHg
 - 70 – 80 mmHg
 - 80 – 90 mmHg
215. Post-partum haemorrhage in a spontaneous delivery is commonly due to:
- Traumatic
 - Uterine atony
 - Blood coagulopathy
 - Mixed causes
216. Danzole is;
- Anabolic steroid
 - Androgens agonist
 - Antiandrogens
 - 5 – alpha – reductaseinhibitor
217. Not associated with twin pregnancy:
- Pre-eclampsia
 - Oligohydramnios
 - Antepartum haemorrhage
 - Atonic uterus
218. In a RH negative mother who has delivered a RH positive baby, prophylactic anti D is indicated:

Team Motivation FMGE Coaching Academy

Mock Test - 3

- a. If the indirect coomb's test (ICT) is negative
- b. If the ICT is positive with rising titres
- c. If the ICT is positive
- d. As a routine procedure
219. All of the following are associated with pathogenesis of acute hydropsfetalis except:
- a. Hydroproteinemia
- b. Anemia
- c. Hypoplasia of placental tissue
- d. Metabolic acidosis
220. IUGR is caused by all except:
- a. Rh incapability
- b. Smoking
- c. DM
- d. CRF
221. While assessing foetal weel being by cardiotocography significance is attached to:
- a. Late decleration
- b. Early decleration
- c. Sinusoidal wave
- d. Variable decleration
222. Indication of acyclovir in pregnancy:
- a. Disseminated herpes
- b. Chicken pox in first semester
- c. Prophylaxis in recurrent herpes
- d. All of the above
223. A 40 years old female presenting with abdominal distension, dyspnoea and weight loss is found to have ascites and raised CA - 125. What is the most likely clinical diagnosis?
- a. Ca ovary
- b. Ca cervix
- c. Ca endometrium
- d. Genitourinary TB
224. Which of the following is not a germ cell tumour of ovary?
- a. Granulosa cell tumour
- b. Dygerminoma
- c. Endodermal sinus tumour
- d. Choriocarcinoma
225. Management of Ca cervix stage III B:
- a. Wertheims hysterectomy
- b. Shautas procedure
- c. Chemotherapy
- d. Intracavitary brachytherapy with external beam radiation
226. Which of the following methods of contraception should be avoided in women with epilepsy:
- a. Oral contraceptive pills
- b. IUCD
- c. Condoms
- d. Diaphragm
227. A 45 year old post-menopausal woman presents with vaginal bleeding. Transvaginal Ultrasound reveals an endometrial thickness of 8.0 mm. The next step in the management should be:
- a. Hysterectomy
- b. Start progesterone therapy
- c. Histopathological examination of curettage
- d. Follow up sonography
228. The drug of choice to treat chlamydia infection in pregnancy is:
- a. Tetracycline
- b. Doxycycline
- c. Erythromycin
- d. Azithromycin
229. Endometrial cancer involving 50% of endometrial. Extending to vagina, lymph nodes negative with positive peritoneal cytology is staged as:
- a. 3a
- b. 3b
- c. 3c1
- d. 3c2
230. Pain of ovarian carcinoma is referred to:
- a. Back of thigh
- b. Gluteal region
- c. Anterior surface of thigh
- d. Medial surface of thigh
231. Which of the following treatments for amenorrhoea is not supported by evidence:
- a. Combined oral contraceptive pills
- b. Progesterone
- c. Tranexamic acid
- d. Ethamsylate

Team Motivation FMGE Coaching Academy

Mock Test – 3

232. An antihormonal substance used to induce ovulation is:
- Mefiprestone
 - Clomiphene citrate
 - Tamoxifen
 - Raloxifen
233. Shape of cervical canal in nulliparous woman is:
- Circular
 - Tubular
 - Transverse
 - Longitudinal
234. The most common cause of tubal block in India is:
- Gonorrhoea infection
 - Chlamydia infection
 - Tuberculosis
 - Bacterial vaginosis
235. Which of the following ovarian tumour is most prone to undergo torsion during pregnancy:
- Serous cystadenoma
 - Mucinous cystadenoma
 - Dermoid cyst
 - Theca lutein cyst
236. The highest incidence of gestational trophoblastic disease is in:
- Australia
 - Asia
 - North America
 - Western Europe
237. The most common pure germ cell tumour of the ovary is:
- Choriocarcinoma
 - Dysgerminoma
 - Embryonal cell tumour
 - Malignant teratoma
238. A 30 years old female being evaluated for anemia reveals the following indices: RBC count – $4.5 \times 10^{12}/L$; MCV 55 fl; TLC 8000. There is no history of blood in transfusion. Which of the following is the most likely diagnosis?
- Iron deficiency anemia
 - Thalassemia major
 - Thalassemia minor
 - Megaloblastic anemia
239. Which of the following findings is diagnostic of iron deficiency anemia:
- Increased TIBC, decreased serum ferritin
 - Decreased TIBC, decreased serum ferritin
 - Increased TIBC, increased serum ferritin
 - Decreased TIBC, increased serum ferritin
240. A patient has Hb 6mg%, folic acid 8ng/ml, vitamin B12 60pg/ml, serum iron 160µg/dl and MCV – 104. The diagnosis is:
- Iron deficiency anemia
 - Vitamin B12 deficiency
 - Folic acid deficiency
 - Pyridoxine deficiency
241. All of the following statements are true about sickle cell disease except:
- Patient may require frequent blood transfusion
 - Acute infection is the most common cause of mortality before 3 years of age
 - There is positive correlation between concentration of HBS and polymerization of HBS
 - Patient presents early in life before 6 months of age
242. A child aged 2 years presents with nonspecific symptoms suggestive of anemia. On peripheral blood smear target cells are seen. He has hypochromic microcytic picture and Hb of 6gm. He also has 'a positive family history' next investigation of choice is:
- Hb electrophoresis
 - Coombs test
 - Liver function test
 - Osmotic fragility test
243. A 23 years old female presents with anemia and jaundice for 2 years. Peripheral smear shows spherocytes. The best investigation to be done is:
- Reticulocyte count
 - Osmotic fragility testing
 - Coombs test

Team Motivation FMGE Coaching Academy

Mock Test – 3

- d. Bone marrow aspiration
244. Pancytopenia with cellular marrow is seen in:
- PNH
 - G6PD deficiency
 - Acquired aplastic anemia
 - Thalassemia
245. A patient presents with a platelet count of 700 X 10⁹/L with abnormalities in size, shape and granularity of platelets. WBC count is 12 X 10⁹/L, Haemoglobin is 11g/dl and Philadelphia chromosome is absent. The most likely diagnosis would be:
- Polycythemiavera
 - Essential thrombocythemia
 - Chronic myeloid leukemia
 - Leukemoid reaction
246. Diagnosis of Hodgkins disease is based on all of the following, except:
- Reed-Sternberg cells
 - Reaction cellular background
 - Atypical cells in background
 - CD 30 positively
247. Which of the following presents as mediastinal enlargement:
- Promyelocyticleukemia
 - CML
 - ALL
 - Diffuse histiocytic lymphoma
248. All of the following conditions are associated with venous and arterial thrombotic events, except:
- Paroxysmal Nocturnal Haemoglobinuria (PNH)
 - Disseminated intravascular coagulation
 - Idiopathic thrombocytopenia purpura (ITP)
 - Heparin induced thrombocytopenia (HIT)
249. A female has episodic, recurrent headache in left hemicranium with nausea and paraesthesia on right upper and lower limbs is most probable suffering from:
- Migraine
 - Glossopharyngeal neuralgia
 - Herpes zoster infection of trigeminal nerve
 - Brain tumour
250. A young girl presents with repeated episodes of throbbing occipital headache associated with ataxia and vertigo. The family history is positive for similar headache in her mother. Most likely diagnosis is:
- Vestibular neuronitis
 - Basilar migraine
 - Cluster headache
 - Tension headache
251. UMN lesion is characterised by:
- Weakness & spasticity
 - Fasciculation
 - Rigidity
 - Localised muscle atrophy
252. Which of the following is not affected by a lesion in posterior column of spinal cord:
- Romberg's sign
 - Temperature sense
 - Vibration sense
 - Ataxia
253. Which of the following is not a feature of extramedullary tumour:
- Early corticospinal sign and paralysis
 - Root pain or midline back pain
 - Abnormal CSF
 - Sacral sparing
254. Bilateral loss of ankle jerk and extensor plantar response is seen in:
- Amyotrophic lateral sclerosis
 - Freidreich's ataxia
 - Tabesdorsalis
 - Lead poisoning
255. All are true about subacute combined degeneration of spinal cord except:
- Due to deficiency of vitamin B12
 - Posterior column involvement
 - Corticospinal involvement
 - Absent deep tendon reflexes
256. Which of the following is not a usual feature of right middle cerebral artery territory infarct?
- Aphasia
 - Hemiparesis

Team Motivation FMGE Coaching Academy

Mock Test – 3

- c. Facial weakness
d. Dysarthria
257. The term post traumatic epilepsy refers to seizures occurring:
- Within moments of head injury
 - Within 7 days of head injury
 - Within several weeks to months after head injury
 - Many years after head injury
258. A patient with cushinoid features presents with hemoptysis; he shows no response to dexamethasone suppression test; most likely diagnosis here is:
- Adrenal hyperplasia
 - Adrenal adenoma
 - Ca lung with ectopic ACTH production
 - Pituitary microadenoma
259. Feature of addison's disease include all of the following except:
- Asthenia
 - Hyperpigmentation
 - Hypertension
 - Abdominal pain
260. All of the following are true about Type I DM, Except:
- Family history is present in 90% of cases
 - Antibodies against β cells
 - Prone to Diabetic ketoacidosis (DKA)
 - Insulin is required for management of DKA
261. A 42 years old male has strong positive Benedict's test Random blood sugar is > 163 mg%, fasting blood sugar is > 200 mg%. Next line of investigation is:
- Urine glucose charting 5 hourly
 - Oral GTT
 - Repeat Benedict's test
 - 24 hr urine sugar estimation
262. A patient presents with symptoms of hypoglycemia. Investigations reveal decreased blood glucose and increased insulin levels. C-peptide assay is done, which shows normal levels of C-peptide. The most likely diagnosis is:
- Insulinoma
 - Accidental sulfonylurea ingestion
 - Accidental exogenous insulin administration
 - Accidental metformin ingestion
263. A 30 years old woman presented with secondary amenorrhoea for 3 years along with galactorrhoea. The most likely cause of her symptoms would be:
- Craniopharyngioma
 - Prolactinoma
 - Meningioma
 - Sub-arachnoid haemorrhage
264. Choose the best lab value for a patient with central diabetes insipidus:
- | Urinary Osmolality | Serum Osmolality |
|--------------------|------------------|
| a. 50 | 300 |
| b. 500 | 260 |
| c. 50 | 260 |
| d. 500 | 100 |
265. Most common cause of death in primary amyloidosis is:
- Respiratory failure
 - Renal failure
 - Cardiac failure
 - Septicaemia
266. IV Immunoglobulins are indicated in all except:
- Kawasaki disease
 - PAN
 - GBS
 - Bruton's hypogammaglobulinemia
267. All of the following are features of Wilson's disease, except:
- Haemolytic anemia
 - Testicular atrophy
 - Chorea
 - Chronic active hepatitis
268. An elderly patient presents with hypertension and diabetes, proteinuria without renal failure. Antihypertensive of choice is:
- Furosemide
 - Methyldopa
 - Enalapril
 - Propranolol

Team Motivation FMGE Coaching Academy

Mock Test – 3

269. All of the following drugs can be used in the management of hypertensive crises except:
- Hydralazine
 - Trimethopphan
 - Nifedipine
 - Indapamide
270. The best chances of recovery after successful cardiopulmonary resuscitation are seen in:
- Ventricular tachycardia
 - Ventricular fibrillation
 - Asystole
 - Electromechanical dissociation
271. What structure separates the scala vestibuli from the scala media?
- Basilar membrane
 - Reissner's membrane
 - Organ of Corti
 - Tectorial membrane
272. Three semicircular canal opens into vestibule by ----- openings
- 3
 - 4
 - 5
 - 6
273. An 82-year-old female comes to the emergency department for the evaluation of right ear pain and drainage for the past two days. She saw her primary care physician approximately one week ago for decreased hearing from the right ear, and he performed aural irrigation to remove impacted cerumen in her right ear. She has a history of hypertension, diabetes mellitus, and rheumatoid arthritis. Her medications include hydrochlorothiazide, enalapril, glyburide, and low-dose prednisone. On physical examination, her temperature is 37.2C (99F), blood pressure is 146/74 mmHg, heart rate is 100/min, and respiratory rate is 16/min. There is marked tenderness with motion of the right earlobe. Purulent discharge and granulation tissue is noted on the floor of the right external auditory canal at the osseocartilaginous junction. The tympanic membrane appears intact. Which of the following is the most appropriate treatment for this patient's condition?
- Topical tobramycin
 - Oral amoxicillin
 - Intravenous acyclovir
 - Intravenous ciprofloxacin
274. Caloric test is performed at
- 27 and 44 degree Celsius
 - 30 and 44 degree Celsius
 - c. 30 and 37 degree Celsius
 - d. 37 and 44 degree Celsius
275. Infection of submandibular area is known as
- Vincent's angina
 - Angina pectoris
 - Ludwig's angina
 - None of the above
276. Iatrogenic disorder due to over use of nasal drops is called
- Rhinitis sicca
 - Atrophic rhinitis
 - Hypertrophic rhinitis
 - Rhinitis medicamentosa
277. Prime modality of Rx of Naso Pharyngeal Ca –
- Radiotherapy
 - Surgery
 - Chemotherapy
 - None of these
278. The opening in case of Dacrocystorhinostomy is made in
- Superior Meatus
 - Middle Meatus
 - Inferior Meatus
 - None of the above
279. The most common diagnosis in a young boy with history of profuse nasal bleeding is
- Juvenile Naso pharyngeal angiofibroma
 - Nasal polyp
 - Deviated nasal septum
 - Cirrhosis
280. Seventeen year old patient, with fever of up to 39°C, intense odynophagia, without improvement following full antibiotic treatment, presence of multiple, large adenopathies in several lymph bases in the neck. Lymphocytosis in the blood count. All in the last 2 weeks. This presentation is suggestive of:
- Acute pharyngotonsillitis

Team Motivation FMGE Coaching Academy

Mock Test – 3

- b. Hodgkin's disease
c. Infectious mononucleosis
d. Ludwig's angina
281. The following statements regarding laryngomalacia are true:
a. It can cause inspiratory stridor.
b. Stridor is relieved by lying the child supine and when feeding.
c. Stridor is worse on lying prone.
d. It is more common in younger children
282. Regarding quinsy, the following statements are true:
a. A quinsy is otherwise known as a peritonsillar abscess.
b. It can be treated with antibiotics and drainage.
c. It is a collection of pus outside the tonsil capsule.
d. It often occurs in patients with acute tonsillitis.
283. Regarding croup, the following statements are true except:
a. It is also known as laryngotracheobronchitis.
b. It may be caused by parainfluenza virus.
c. Treatment may involve nebulised steroids and beta-receptor agonists.
d. It is most common in teenagers
284. Pulsatile tinnitus in the ear is due to
a. Malignant otitis media
b. Osteoma of external canal
c. Mastoid reservoir phenomena
d. Glomus tumor
285. Which of the following will cause retrocochlear hearing loss
a. Meniere's disease
b. Cochlear otosclerosis
c. Perilymph fistula
d. Acoustic neuroma
286. In Marcus Gunn pupil, the pupillary reaction with light is
a. Normal reaction
b. Sluggish reaction
c. No reaction with pin point pupil
d. No reaction with dilated pupil
287. Sudden increase in blood sugar in Diabetics cause (Principles of Internal Medicine 16/e-Harrison vol
a. Myopia
b. Presbyopia
c. Anisometropia
d. Hypermetropia
288. Aniseikonia means:
a. Difference in the axial length of the eyeballs.
b. Difference in the size of corneas
c. Difference in the size of pupils
d. Difference in the size of images formed by the two eyes
289. Salmon patch is seen in
a. Glaucoma
b. Interstitial keratitis
c. Corneal ulcer
d. Iritis
290. The crystalline lens derives its nourishment from
a. Blood vessels
b. Connective tissue
c. Aqueous and vitreous
d. Zonules
291. Earliest field defect of glaucoma is
a. Baring of blind spot
b. Multiple field defects near macula
c. Ronnie's nasal step
d. Arcuate scotoma
292. Rhegmatogenous detachment is seen in
a. Glaucoma
b. Retinitis pigmentosa
c. Diabetes mellitus
d. Retinoblastoma
293. Most severe papilloedema is caused by
a. Pituitary tumor
b. Frontal lobe tumor
c. Posterior cranial fossa tumor
d. Medulloblastoma
294. A man presents 6 hrs after head injury complains in of mild proptosis and scleral hyperemia. The probe ble diagnosis is
a. Pneumo orbit
b. Caroticocavernous fistula
c. Retro orbital hematoma
d. Orbital cellulitis
295. Treatment of choice for photophobia is
a. Irrigation with antibiotics
b. Irrigation with local anesthesia
c. Irrigation with saline
d. Covering the eye

Team Motivation FMGE Coaching Academy

Mock Test - 3

296. Flower petal appearance in fluorescein angiography is seen in
- Choroiditis
 - Cystoid macular edema
 - Choroidal nodulitis
 - Central serousretinopathy
297. Oculomotor nerve palsy affects all of the following muscles, EXCEPT:
- Medial rectus
 - Inferior oblique
 - Lateral rectus
 - Levator palpebrae superioris
298. The reciprocal inhibition of antagonistic muscle upon lateral gaze is explained by:
- Sherrington law
 - Herring law
 - Laplace law
 - Hick's law
299. A 35 year old insulin dependent diabetes mellitus (IDDM) patient on insulin for the past 10 years complains of gradually progressive painless loss of vision. Most likely he has
- Cataract
 - Vitreous haemorrhage
 - Total rhegmatogenous retinal detachment
 - Tractional retinal detachment not involving the macula
300. While working in a neonatal ICU. Your team delivers premature infant at 27 weeks of gestation and weighting 1500gm. How soon will you request fundus examination by an ophthalmologist
- Immediately
 - 3-4 weeks after delivery
 - At 34 weeks gestational age
 - At 40 weeks gestational age

Team Motivation FMGE Coaching Academy

Mock Test - 3

Team Motivation FMGE Coaching Academy											
Mock Test 3											
Q.	Ans	Q.	Ans	Q.	Ans	Q.	Ans	Q.	Ans	Q.	Ans
1	C	51	B	101	D	151	C	201	B	251	A
2	A	52	C	102	C	152	B	202	B	252	B
3	A	53	A	103	B	153	B	203	C	253	D
4	B	54	A	104	D	154	B	204	C	254	B
5	B	55	A	105	B	155	B	205	B	255	D
6	A	56	A	106	A	156	A	206	A	256	A
7	C	57	C	107	A	157	D	207	B	257	C
8	A	58	A	108	B	158	C	208	B	258	C
9	D	59	C	109	C	159	A	209	C	259	C
10	A	60	D	110	A	160	A	210	D	260	A
11	B	61	B	111	D	161	D	211	D	261	B
12	B	62	D	112	D	162	A	212	A	262	C
13	D	63	B	113	B	163	D	213	C	263	B
14	C	64	B	114	A	164	C	214	C	264	A
15	A	65	A	115	A	165	A	215	B	265	C
16	D	66	B	116	D	166	B	216	C	266	B
17	D	67	B	117	C	167	C	217	B	267	B
18	D	68	C	118	D	168	C	218	A	268	C
19	D	69	C	119	D	169	A	219	C	269	D
20	A	70	C	120	B	170	C	220	A	270	A
21	A	71	B	121	A	171	C	221	A	271	B
22	C	72	A	122	A	172	A	222	D	272	C
23	B	73	B	123	D	173	D	223	A	273	D
24	B	74	B	124	D	174	B	224	A	274	B
25	D	75	B	125	A	175	A	225	D	275	C
26	D	76	B	126	B	176	C	226	A	276	D
27	C	77	A	127	D	177	C	227	C	277	A
28	B	78	C	128	B	178	C	228	D	278	B
29	B	79	D	129	B	179	C	229	B	279	A
30	D	80	A	130	D	180	A	230	D	280	C
31	A	81	C	131	A	181	A	231	D	281	A
32	D	82	B	132	A	182	C	232	B	282	C
33	B	83	A	133	C	183	C	233	C	283	D
34	D	84	A	134	C	184	B	234	C	284	D
35	C	85	B	135	A	185	A	235	C	285	D
36	C	86	D	136	D	186	C	236	B	286	B
37	B	87	C	137	B	187	A	237	B	287	A
38	C	88	D	138	A	188	B	238	C	288	D
39	B	89	D	139	A	189	C	239	A	289	B
40	C	90	D	140	B	190	C	240	B	290	C
41	C	91	C	141	B	191	B	241	D	291	A
42	D	92	B	142	B	192	A	242	A	292	A
43	B	93	C	143	B	193	A	243	C	293	C
44	A	94	D	144	C	194	B	244	A	294	C
45	C	95	D	145	C	195	B	245	B	295	D
46	A	96	D	146	B	196	D	246	C	296	B
47	C	97	C	147	D	197	A	247	C	297	C
48	A	98	C	148	B	198	A	248	C	298	A
49	C	99	D	149	D	199	C	249	A	299	D
50	B	100	B	150	A	200	A	250	B	300	C