

Mock Test – 1

Dec – 2018

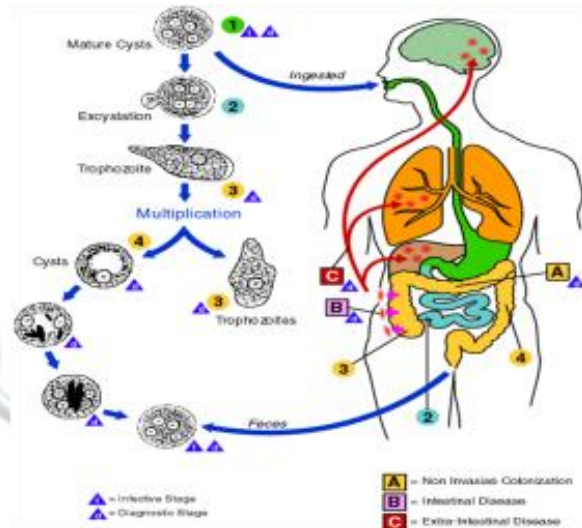
1. The SA node is situated at:
 - a. Triangle of Koch
 - b. Fossa ovalis
 - c. Coronary sinus
 - d. Crista terminalis
2. The superficial fatty layer of lower abdominal wall is:
 - a. Camper's fascia
 - b. Scarpa's fascia
 - c. Cremasteric fascia
 - d. Thoraco-lumbar fascia
3. The clotting of blood in normal intact vascular segment is prevented by all of the following except
 - a. Smooth endothelium
 - b. Absence of glycocalyx on endothelium
 - c. Presence of thrombomodulin
 - d. Continuous blood flow
4. What is Hering-Breuer inflation reflex
 - a. A chemically mediated reflex for inspiration
 - b. A stretch receptor mediated reflex for stopping inspiration
 - c. A chemically mediated reflex to stop respiration
 - d. None of the above
5. Type of amyloidosis seen in Rheumatoid arthritis is:
 - a. AL / Primary
 - b. AA / Reactive systemic amyloidosis
 - c. A β
 - d. A β 2m
6. All of the following genes are present on chromosome number 17 except:
 - a. p53
 - b. BRCA-1
 - c. Neurofibromatosis – 1
 - d. None of the above
7. All of the following tumour are associated with PTEN gene except:
 - a. Follicular carcinoma of thyroid
 - b. Endometrial carcinoma
 - c. Ovarian carcinoma
 - d. Breast carcinoma
8. Thyroid hormone belong to which class of hormone
 - a. Steroids
 - b. Proteins
 - c. Polypeptides
 - d. Amino acid derivatives
9. Most synapses in the nervous system are
 - a. Chemical
 - b. Electrical
 - c. Mechanical
 - d. Conjoint
10. The constituents of spermatic cord are all except:
 - a. Genital branch of genito-femoral nerve
 - b. Ilio-inguinal nerve
 - c. Pampiniform plexus of veins
 - d. Remains of processus vaginalis
11. The foramen of Winslow connect:
 - a. Greater sac with omental bursa
 - b. Greater sac with pelvic cavity
 - c. Thoracic cavity with abdominal cavity
 - d. None
12. All of the following structures pass through foramen ovale except:
 - a. Maxillary nerve
 - b. Mandibular nerve
 - c. Accessory meningeal artery
 - d. Lesser petrosal nerve
13. Which of the following agent(s) are associated with gingival hyperplasia?
 - a. Nifedipine
 - b. Cyclosporin
 - c. Phenytoin
 - d. All of the above
14. Unfractionated heparin inactivates clotting factor(s).
 - a. Xa
 - b. IIa
 - c. Both A & B
 - d. Antithrombin III
15. What is the main clinical use for agonists of the β 2-adrenoceptor?
 - a. Treatment of angina
 - b. Treatment of hypertension
 - c. Treatment of arrhythmias
 - d. None of the above
16. Preganglionic sympathetic and parasympathetic fibers release ____, postganglionic parasympathetic fibers release ____ and postganglionic sympathetic fibers release ____ .
 - a. ACh; ACh; NE
 - b. ACh; NE; ACh
 - c. NE; ACh; NE
 - d. NE; NE; Ach
17. Chordalchondrocranium include all except:
 - a. Ethmoid
 - b. Body of sphenoid
 - c. Petrous part of temporal bone
 - d. Basiocciput
18. Which of the following compounds is incorrectly matched with one of its therapeutic uses?
 - a. Letrazole: Advanced breast cancer
 - b. Metformin: DM type2
 - c. Finasteride : Benign prostatic hyperplasia
 - d. Propylthiouracil: Hyperparathyroidism
19. Which of the following steroid produces the maximum sodium retention?
 - a. Hydrocorticosone
 - b. Prednisolone

Mock Test – 1

Dec – 2018

- c. Dexamethasone
 - d. Fludrocortisone
20. Idiosyncrasy reaction of a drug is
- a. A type of hypersensitivity reaction
 - b. A type of drug antagonism
 - c. Unpredictable, inherent, qualitatively abnormal reaction of a drug
 - d. Quantitatively exaggerated response
21. The dorsal column tract is:
- a. Tract of Burdach
 - b. Lateral spinothalamic tract
 - c. Anterior spinothalamic tract
 - d. Cortico-spinal tract
22. The cranial nerves attached at ponto-medullary junction are:
- a. V, VI, VII
 - b. VI, VII, VIII
 - c. VII, VIII, IX
 - d. IX, X, XI
23. The bipolar neurons are all except:
- a. Olfactory neuron
 - b. Spiral ganglion
 - c. Vestibular ganglion
 - d. Gasserian ganglion
24. In a 55- year-old man, who has been diagnosed with cirrhosis of liver, Ammonia is not getting detoxified and can damage brain. Which of the following amino acids can covalently bind ammonia, transport and store in a non toxic form?
- a. Aspartate
 - b. Glutamate
 - c. Serine
 - d. Cysteine
25. A 3- month-old child is being evaluated for vomiting and an episode of convulsions, Laboratory results show hyperammonemia and Orotic aciduria. Which of the following enzyme defect is likely to be there?
- a. Glutaminase
 - b. Arginase
 - c. Argino succinic acid synthase
 - d. Ornithine Transcarbamoylase
26. All are true about filariasis caused by Brugiamalayi except
- a. Sheathed microfilaria detection from peripheral blood
 - b. Genital involvement seen
 - c. Vector is Mansonia
 - d. Also causes tropical pulmonary syndrome
27. All of the following are true about Schistosoma except
- a. Schistosoma also known as blood flukes
 - b. Definitive host is man
 - c. It is hermaphrodite
 - d. X-ray of pelvis shows fetal head appearance
28. Drug of choice of quinine resistant malaria is

- a. Artemisinin derivatives
 - b. Chloroquine
 - c. Tetracycline
 - d. Primaquine
29. Identify the organism showing in picture



- a. Malaria parasite
 - b. Leishmaniadonovani
 - c. Round worm
 - d. Entamoebahistolytica
30. Vancomycinresistance in enterococci is due to
- a. Transposons
 - b. Conjugation
 - c. Transduction
 - d. Lysogenic conversion
31. A patient diagnosed with Hart Nup disease, (due to deficiency of transporter required for the absorption of amino acid tryptophan), has been brought with skin rashes and suicidal tendencies. Tryptophan is a precursor for many compounds, the deficiencies of which can cause the said symptoms. Which out of the following compounds is not synthesized by tryptophan?
- a. Serotonin
 - b. Epinephrine
 - c. Melatonin
 - d. Niacin
32. Histamine, a chemical mediator of allergies and anaphylaxis, is synthesized from amino acid Histidine by which of the following processes?
- a. Deamination
 - b. Decarboxylation
 - c. Transamination
 - d. Dehydrogenation
33. The synthesis of all of the following compounds except one is deficient in a patient suffering from Phenylketonuria-
- a. Melanin
 - b. Melatonin
 - c. Catecholamines

Mock Test – 1

Dec – 2018

- d. Thyroid hormone
34. The decreasing order of risk of transmission following occupational exposure
- HIV > HBV > HCV
 - HBV > HIV > HCV
 - HBV > HCV > HIV
 - HCV > HBV > HIV
35. Which culture medium is preferred for processing of urine specimen
- TCBS agar
 - CLED agar
 - Chocolate agar
 - XLD agar
36. Germ tube test is diagnostic for
- Candida galabrata
 - Candida albicans
 - Cryptococcus
 - Coccidioides immitis
37. Beveling cut refers to
- Flap wound
 - Overhang margins
 - One margin under mined
 - Irregular margins
38. Chadwick's sign is
- Softening of cervix
 - Increased vaginal mucous secretion
 - Blue colouration of vagina
39. Haemoglobinuria occurs when burnt skin surface exceeds
- 20 %
 - 30 %
 - 50 %
 - 70 %
40. A 32 year-old farmer received abdominal trauma, after 2 hours the pulse reached 136/min, blood pressure 70/40. The cause is:
- Shock
 - Sympathetic shock
 - Internal haemorrhage
 - Air embolism
41. Adipocere of the whole body occurs in about:
- One month
 - 2 months
 - 6 months
 - 12 months
42. Dose of pre-exposure vaccination of rabies is
- 0, 7, 28 days
 - 0, 3, 7 days
 - 0, 14, 21 days
 - 0, 3, 7, 14, 28 days
43. Co-receptor for fast progressive HIV is
- CD4
 - CCR5
 - CxCR4
 - All of the above
44. All are true about blood agar except
- Enriched media
 - May be a differential media
 - 5-10% sheep blood used
 - Can be used as transport media
45. Which out of the following amino acids is not required for creatine synthesis?
- Methionine
 - Serine
 - Glycine
 - Arginine
46. The first line of defence in brain in conditions of hyperammonemia is-
- Urea formation
 - Glutamine synthesis
 - Glutamate synthesis
 - Asparagine formation
47. Which out of the followings is required as a coenzyme for the transamination reactions?
- Coenzyme A
 - Pyridoxal-P
 - Folic acid
 - Cobalamine
48. In a patient suffering from Cystinuria, which out of the following amino acids is not seen in urine of affected patients?
- Arginine
 - Methionine
 - Lysine
 - Ornithine
49. A child was brought to paediatric OPD with complaint of passage of black colored urine. A disorder of Phenylalanine metabolism was diagnosed. A low phenylalanine diet and a supplementation of vitamin C were recommended. Which enzyme defect is expected in this child?
- Phenyl alanine hydroxylase
 - Tyrosine transaminase
 - Homogentisic acid oxidase
 - Hydrolase
50. Which statement best describes the oxidation of odd chain fatty acids?
- Additional specific enzymes are needed for the oxidative process
 - One carbon is removed in one cycle
 - End product is propionyl co A
 - Hydroxy fatty acids are produced
51. What is the molecular basis of the statement "fats burn in the flame of carbohydrates" -
- Fats are hydrolyzed in the presence of carbohydrates
 - Fatty acids and glucose are simultaneously oxidized
 - Acetyl co A is the common product of fatty acid and glucose oxidation

Mock Test – 1

Dec – 2018

- d. Acetyl co A is oxidized completely in the presence of oxaloacetate in TCA cycle
52. NADPH required for the fatty acid synthesis can be generated from-
- HMP pathway
 - Glycolysis
 - TCA cycle
 - All of the above
53. Which of the following is a required substrate for purine biosynthesis
- 5- methyl thymidine
 - Ara -C
 - Ribose phosphate
 - PRPP
54. Insulin increases the activity of which of the following enzymes
- Acetyl CoA carboxylase
 - Glucose 6 phosphatase
 - Glycogen synthase
 - Pyruvate kinase
55. The following structures form the cervico-axillary canal except:
- Clavicle
 - Coracoid process
 - Upper border of scapula
 - Outer border of first rib
56. Which muscle locks the knee joint:
- Popliteus
 - Gastrocnemius
 - Quadratus femoris
 - Quadriceps femoris
57. Which type of gait is seen in unilateral paralysis of gluteus medius muscle:
- Lurching
 - Waddling
 - Scissors
 - Propulsion
58. All of the following structures pass through thoracic inlet except:
- Phrenic nerve
 - Vagus nerve
 - Superior vena cava
 - Trachea
59. All are true about electron microscopy except
- In place of light, Electron beam is used
 - Used for identification of dead organism
 - Staining done by phosphotungstic acid
 - Resolution power of this is 10 times of light microscope
60. House fly acts as mechanical vector for transmission of all the following infections, except
- Amoebiasis
 - Typhoid and paratyphoid fever
 - Malaria
 - Cholera
61. The most likely complication of prolonged use of nasal decongestant drops is:
- Anosmia
 - Hypertrophy of nasal mucosa
 - Naso-pharyngeal candidiasis
 - Blockage of Eustachian tubes
62. While prescribing the conventional H1 antihistaminics the patient should be advised to avoid:
- Driving motor vehicles
 - Consuming processed cheese
 - Strenuous physical exertion
 - None of the above
63. Ketoconazole should not be given to patient being treated with terfenadine because
- Ketoconazole induces the metabolism of terfenadine
 - Dangerous ventricular arrhythmias can occur
 - Terfenadine inhibits metabolism of Ketoconazole
 - Terfenadine antagonizes the antimicrobial action of Ketoconazole
64. Which of the following drugs used for the treatment of angina via sublingual route has a very rapid onset and a brief duration of effect?
- Amyl nitrite
 - Nitroglycerine
 - Isosorbide mononitrate
 - Nifedipine
65. A 52- year old man presents to his doctor for a 6-month checkup following diuretic therapy and recommended diet changes for his essential hypertension. His blood pressure is 145/95 mmHg and serum aldosterone levels are increased. Aldosterone secretion is increased when there is a decrease in the plasma concentration of which of the following
- Adrenocorticotrophic hormone (ACTH)
 - Angiotensin II
 - Potassium
 - Sodium
66. Which of the following does not occur following adrenergic stimulation?
- Dilation of the pulmonary bronchi
 - Dilation of the pupils
 - Increased heart rate
 - Peristalsis of the GI tract
67. Lesion of the optic radiation causes
- Blindness in the same eye
 - Blindness in the opposite eye
 - Bitemporal hemianopia
 - Homonymous hemianopia with macular sparing

68. A patient experiences orthostatic hypotension after a sympathectomy. The explanation for this occurrence is
- An exaggerated response of the renin-angiotensin-aldosterone system
 - A suppressed response of the renin-angiotensin-aldosterone system
 - An exaggerated response of the baroreceptor mechanism
 - A suppressed response of the baroreceptor mechanism
69. A person eats a large bag of very salty potato chips with no beverage. Which response is most likely to occur
- Movement of aquaporins into the membranes of cortical collecting duct principal cells
 - Enhanced activity of Na-H antiporters in the proximal tubule
 - Enhanced activity of Na-K-ATPase pumps in collecting duct principal cells
 - Decreased levels of natriuretic peptides in the blood
70. After a potassium rich meal, the key action of insulin that prevents a large increase in plasma is to
- Decrease absorption of potassium from the GI tract
 - Increase uptake of potassium by tissue cells
 - Increase the filtered load of potassium
 - Increase tubular secretion of potassium
71. The rate of conduction of action potentials along a nerve will be increased by
- Stimulating the Na⁺-K⁺ pump
 - Inhibiting the Na⁺-K⁺ pump
 - Decreasing the diameter of the nerve
 - Myelinating the nerve
72. During exercise, total peripheral resistance decreases because of the effect of
- The sympathetic nervous system on splanchnic arterioles
 - The parasympathetic nervous system on skeletal muscle arterioles
 - Local metabolites on skeletal muscle arterioles
 - Local metabolites on cerebral arterioles
73. A man who has galactorrhea is found to have a prolactinoma. His physician treats him with bromocriptine which eliminates the galactorrhea. The basis for the therapeutic action of bromocriptine is that it
- Antagonizes the action of prolactin on the breast
 - Enhances the action of prolactin on the breast
 - Inhibits prolactin release from the anterior pituitary
 - Inhibits prolactin release from the hypothalamus
74. Second messengers
- Are substances that interact with first messengers outside cells
 - Are substances that bind to first messengers in the cell membrane
 - Are hormones secreted by cells in response to stimulation by another hormone
 - Mediate the intracellular responses to many different hormones and neurotransmitters
75. Drugs and toxins that increase the cAMP content of the intestinal mucosa cause diarrhea because they
- Increase Na⁺-K⁺ cotransport in the small intestine
 - Increase K⁺ secretion into the colon
 - Increase Na⁺ absorption in the small intestine
 - Increase Cl⁻ secretion into the intestinal lumen
76. The second meiotic division is completed in the ovum
- At birth
 - Fifth month of fetal life
 - Puberty
 - Fertilization
77. Filtration of proteins across filtration barrier in the nephron depends mainly upon
- Sialoprotein
 - Aquaporin
 - Calmodulin
 - Receptor proteins
78. A 52-year old man presents to his doctor for a 6-month checkup following diuretic therapy and recommended diet changes for his essential hypertension. His blood pressure is 145/95 mmHg and serum aldosterone levels are increased. Aldosterone secretion is increased when there is a decrease in the plasma concentration of which of the following
- Adrenocorticotropic hormone (ACTH)
 - Angiotensin II
 - Potassium
 - Sodium
79. Which of the following does not occur following adrenergic stimulation?
- Dilation of the pulmonary bronchi
 - Dilation of the pupils
 - Increased heart rate
 - Peristalsis of the GI tract
80. Poroscopy is
- Counting pores of sweat glands only

- b. Counting pores of both sweat and sebaceous glands
 c. Counting number of ridges
 d. Counting number of ridges and sweat glands
81. Most fixed part of intestine is
 a. Duodenum
 b. Jejunum
 c. Colon
 d. Ileum
82. The articular cartilage is characterised by all except
 a. It is avascular
 b. It lacks the capacity to regenerate
 c. It has rich nerve supply
 d. It is devoid of perichondrium
83. The longest phase of cell division is
 a. Interphase
 b. Prophase
 c. Metaphase
 d. Anaphase
84. The Haversian system is found in
 a. Cancellous bone
 b. Epiphysis of long bone
 c. Diaphysis of long bone
 d. Spongy bone of children
85. The muscle which is supplied by median nerve in the arm:
 a. Brachialis
 b. Coracobrachialis
 c. Pronator quadratus
 d. None of the above
86. Rectal temperature does not appreciably fall till what time after death
 a. 15-30 mts
 b. 30-60 mts
 c. 60-90 mts
 d. none of the above
87. Combustible gas of autolysis is
 a. Nitrogen dioxide
 b. Hydrogen sulphide
 c. Methane
 d. Carbon dioxide
88. Prolonged prothrombin time occurs in cases of poisoning with:
 a. Parathion
 b. Warfarin
 c. Paraquat
 d. Zinc sulphide
89. All are the stains used for lipid accumulations except:
 a. Oil Red O
 b. Best carmine
 c. Sudan black
 d. Osmium tetroxide
90. Diapedesis (Transmigration) occurs by molecule:
 a. Selectins
 b. Integrins
 c. Platelet – endothelial cell adhesion molecule
 d. Sialyl-Lewis Ligand
91. Hunter syndrome, hemophilia A & B and Wiskott-Aldrich syndrome all are example of intertance:
 a. Autosomal dominant
 b. Autosomal recessive
 c. X linked recessive
 d. X linked dominant
92. Most important HLA for organ transplantation and tissue typing is:
 a. HLA – DP
 b. HLA – DQ
 c. HLA – DR
 d. HLA – B
93. Alpha granules in platelets contain:
 a. Platelet derived growth factor
 b. Calcium
 c. Serotonin
 d. Adenosine diphosphate
94. Most common site of involvement in syphilitic aneurysm is:
 a. Ascending aorta
 b. Arch of aorta
 c. Abdominal aorta
 d. Femoral artery
95. All are the features of polyarteritis Nodosa except:
 a. Glomerulonephritis
 b. Pulmonary capillaries are spared
 c. Associated with hepatitis B surface antigen
 d. Does not involve small vessel
96. Best predictor of future coronary artery disease is:
 a. HSCRP (High Sensitive C Reactive Protein)
 b. Total cholesterol / HDL Ratio
 c. LDL
 d. HDL
97. Alcohol toxicity causes the cardiomyopathy type:
 a. Ischemic
 b. Dilated
 c. Restrictive
 d. Hypertrophic
98. Upper lobe bronchiectasis is seen in:
 a. Cystic fibrosis
 b. Allergic bronchopulmonary aspergillosis
 c. Atypical mycobacteria
 d. Aspiration
99. A 36-year old woman who is pregnant is diagnosed with hypertension. Which of the following agents would be the most suitable to treat her hypertension?
 a. Atenolol
 b. Labetolol
 c. Magnesium sulphate

- d. Indapamide
100. A 53-year-old woman is being treated for atrial flutter subsequent to a myocardial infarction. After commencing treatment she experiences prolonged depression, bradycardia and wheezing. Which of the following agents was the patient prescribed?
- Propranolol
 - Verapamil
 - Digoxin
 - All of the above
101. The test likely to help in diagnosis of a patient who presents with an itchy annular plaque on the face is:
- Gram's stain
 - Potassium hydroxide mount
 - Tissue smear
 - Wood's lamp examination
102. Uses of woods light includes
- Urine examination in porphyria
 - Examination of hair in T. capitis
 - Sclerema
 - All of the above
103. A pinkish red fluorescence of urine with wood's Lamp is seen in
- Lead poisoning
 - Porphyria cutanea tarda
 - Erythromelalgia
 - Acrocyanosis
104. An elevation which of the following serum enzymes is the most sensitive indicator of myositis:
- Aldolase
 - Creatinine kinase
 - Glutamic – oxaloacetic transaminase
 - Glutamate pyruvate transaminase
105. A person with involvement of upper respiratory tract lungs and kidney shows evidence of granulomas on histo pathology. The most likely diagnosis is:
- Wegener's granulomatosis
 - Goodpasture syndrome
 - Tuberculosis
 - Sarcoidosis
106. The drug of choice in a 50 year old patient presenting with hyperglycaemia and ketoacidosis:
- Oral hypoglycaemic drugs
 - Lente insulin
 - Oral drugs with intermediate acting insulin
 - Regular insulin
107. Commonest site of Atopic dermatitis is Discuss
- Scalp
 - Elbow
 - Trunk
 - Ante cubital fossa
108. Atopic dermatitis can be best diagnosed by

- Clinical evaluation
 - Patch test
 - IgE level
 - Skin Biopsy
109. Lowest blood gas coefficient in of which of the following agent:
- Xenon
 - Desflurane
 - Sevoflurane
 - Nitrous oxide
110. 20 year old has to undergo circumcision surgery. Penile block planned which not to be used?
- Lignocaine with adrenaline
 - Lignocaine with Na+CO3
 - Lignocaine
 - Bupivacaine
111. Signs of successful stellate ganglion block all except:
- Miosis
 - Guttman sign
 - Bradycardia
 - Muller sign
112. Laudano sign is a metabolite of:
- Atracurium
 - Vecuronium
 - Pancuronium
 - Gallamine
113. Perception of ordinary non noxious stimuli as pain is better known as:
- Hyperalgesia
 - Hyperesthesia
 - Allodynia
 - Radiculopathy
114. A 52 year old male suffering from over growth of skin and its appendages as per figure. What is the diagnosis



- Basal cell Carcinoma
 - Squamous cell Ca
 - Rhinophyma
 - Melanoma
115. Which is the best test to differentiate CSF rhinorrhea from allergic rhinitis
- Reservoir sign
 - Double target sign

Mock Test – 1

Dec – 2018

- c. Forward bending test
d. Beta trace protein test
116. Most common site of fracture of mandible is
a. Condylar process
b. Angle
c. Body
d. Symphysis
117. Culture bound syndrome seen in India are the following:
a. Dhat, Jiryān
b. Koro
c. Possession syndrome
d. All
118. A person drinking alcohol says that he is doing so to overcome family problems. The defense mechanism involved is:
a. Rationalization
b. Denial
c. Projection
d. Displacement
119. Expanisile type osseous metastases are characteristic of primary malignancy of:
a. Kidney
b. Bronchus
c. Breast
d. Prostate
120. A patient with nephrotic syndrome on longstanding corticosteroids therapy may develop all of the following except:
a. Hyperglycemia
b. Hypertrophy of muscle
c. Neuropsychiatric syndrome
d. Suppression of pituitary adrenal axis
121. Positive Urinary Anion Gap helps to establish the diagnosis of:
a. Alcoholic ketoacidosis
b. Diabetic ketoacidosis
c. Renal tubular acidosis
d. Acidosis in diarrhoea
122. All of the following are true about Osmotic Diarrhoea except:
a. Stool volume < 1L/day
b. Diarrhoea stops after fasting
c. Osmolar gap < 50
d. All of the following
123. Which is the objective sign of identifying pulmonary plethora in a chest radiograph?
a. Diameter of the main pulmonary/ artery > 16mm.
b. Diameter of the left pulmonary artery > 16mm
c. Diameter of the descending right pulmonary artery > 16mm
d. Diameter of the descending left pulmonary artery > 16 mm
124. The most common location of hypertensive intracranial haemorrhage is:
a. Subarachnoid space
b. Basal ganglia
c. Cerebellum
d. Brainstem
125. Metabolic abnormality seen in multiple myeloma is:
a. Hyponatremia
b. Hypokalemia
c. Hypercalcemia
d. Hyperphosphatemia
126. All of the following modalities can be used for in-situ ablation of liver secondaries, except:
a. Ultrasonic waves
b. Cryotherapy
c. Alcohol
d. Radiofrequency
127. Which of the following is used in the treatment of differentiated thyroid cancer:
a. ¹³¹I
b. ^{99m}Tc
c. ³²P
d. ¹³¹I-MIBG
128. The active substance in hashish is:
a. Morphine
b. LSD
c. Mescaline
d. Tetrahydrocannabinol
129. False regarding Histrionic personality disorder
a. Characterized by seductive and overdramatic behaviour
b. More frequently diagnosed in women than men
c. Lability of mood
d. Introspective
130. MC used investigation to diagnose congenital malformations of uterus is
a. MRI
b. Laparoscopy
c. 3 D TVS
d. HSG
131. All are causes of carcinoma cervix except
a. HPV
b. Multiple sexual partners
c. Nulliparity
d. Low socioeconomic status
132. Best test to diagnose tubal patency is
a. X ray
b. USG
c. SSG
d. Laparoscopic chromopertubation
133. Sexual infidelity is commonly associated with:
a. Morbid jealousy
b. Fear
c. Manic depressive psychosis

- d. Anxiety neurosis
134. Typically bilateral inferior lens subluxation of the lens is seen in:
- Marfan's syndrome
 - Homocystinuria
 - Hyperlysinaemia
 - Ocular trauma
135. Spalding's sign occurs after:
- Birth of live foetus
 - Death of foetus in uterus
 - Rigor mortis of infant
 - Cadaveric spasm.
136. Which of the following conditions is least likely to present as an acentric osteolytic lesion:
- Aneurysmal bone cyst
 - Giant cell tumor
 - Fibrous cortical defect
 - Simple bone cyst
137. Which of the following malignant tumours is radioresistant?
- Ewing's sarcoma
 - Retinoblastoma
 - Osteosarcoma
 - Neuroblastoma
138. Which one of the following has the maximum ionization potential?
- Electron
 - Proton
 - Helium ion
 - Gamma (γ)-Photon
139. Most common wall of Orbit involved in a Blowout Fracture is:
- Medial
 - Floor
 - Lateral
 - Roof
140. A female patient 18 years old, who is contact lens wearer since two years, is complaining of redness, lacrimation and foreign body sensation of both eyes. On examination, visual acuity was 6/6 with negative fluorescein test. The expected diagnosis can be:
- Acute anterior, uveitis
 - Giant papillary conjunctivitis
 - Bacterial corneal ulcer
 - Acute congestive glaucoma
141. Topical steroids are contraindicated in a case of viral corneal ulcer for fear of:
- Secondary glaucoma
 - Cortical cataract
 - Corneal perforation
 - Secondary viral infection.
142. The sure diagnostic sign of corneal ulcer is
- Ciliary injection
 - Blepharospasm
 - Miosis
 - Positive fluorescein test
143. The commonest cause of hypopyon corneal ulcer is:
- Moraxella
 - Gonococcus
 - Pneumococcus
 - Staphylococcus
144. Disinfection of water by routine chlorination can be classified as
- Sterilization
 - Concurrent disinfection
 - Terminal disinfection
 - Pre current disinfection
145. The incubation period for measles is-
- 2-6 days
 - 18-72 hours
 - 1-3 weeks
 - 10-14 days
146. The duration of quarantine is
- Longest incubation period
 - Shortest incubation period
 - Period of infectivity
 - Twice the incubation period
147. Best way to study relationship between two variables is-
- Bar chart
 - Scatter diagram
 - Histogram
 - Pie chart
148. The PEFR of a group of 11-year-old girls follows a normal distribution with mean 300 l/min and standard deviation 20 l/min. Which is true -
- About 95% of the girls have PEFR between 260 and 340 l/min
 - The girls have healthy lungs
 - About 5% of girls have PEFR below 260 l/min
 - All the PEFR must be less than 340 l/min
149. If the birth weight of each of the 10 babies in a hospital in a day is found to be 2.8 kg, then the SD of this sample will be-
- 2.8
 - 0
 - 1
 - 0.28
150. Burtonian Lines on gums are seen in which occupational exposure?
- Mercury
 - Asbestos
 - Lead
 - Cadmium
151. The standard normal distribution is-
- Is skewed to the left
 - Has mean=1
 - Has standard deviation=0
 - Has variance=1

Mock Test – 1

Dec – 2018

152. In a 4*5 contingency table, the number of degrees of freedom equals to-
- 1
 - 20
 - 12
 - 6
153. The highest point in spectrum of health is
- Positive health
 - Better health
 - Freedom from sickness
 - death
154. Protein content in Human milk is (in gms/lit)
- 11
 - 1.1
 - 33
 - 3.3
155. A 8 months old baby is brought for third dose of pentavalent and OPV after 3 to 4 months of receiving the second dose of pentavalent and OPV. The next course of immunization would be
- To start the first dose of pentavalent and OPV and ignore the earlier doses
 - To ignore the long interval and give 3rd dose of pentavalent and OPV
 - To give only OPV third dose
 - To give only Pentavalent vaccine
156. Screening for breast cancer using mammography is-
- Primordial prevention
 - Primary prevention
 - Secondary prevention
 - Tertiary prevention
157. People were separated into 5 sub-groups. People were selected randomly from these sub-groups. What type of sampling was done?
- Simple random sampling
 - Stratified sampling
 - Cluster sampling
 - Systematic sampling
158. Best way to plot the change of incidence of disease over time is-
- Histogram
 - Line chart
 - Scatter diagram
 - Ogive
159. Incineration is not done for -
- Waste sharps
 - Cytotoxic drugs
 - Human anatomical waste
 - Animal waste
160. All of the following regarding health planning committees in India is true except:
- Bhore committee proposed setting up of 1 PHC per 40,00 populations and to prepare social physicians
 - Mudaliar committee proposed the setting up of the All India Health Service
 - Shrivastava committee proposed the ROME scheme and the Village health guide scheme
 - Mukherji committee proposed the cadre of male and female health workers and to have supervisors to overlook them
161. Which of the following about Rickettsial diseases is true -
- Epidemic typhus is flea borne
 - Mite is the vector for Rickettsial Pox
 - Orientiatsutsugamushi is the agent causing Murine typhus
 - Coxiellaburnetti causes Scrub typhus
162. Kala Azar is endemic in all states except?
- Uttar pradesh
 - Bihar
 - West Bengal
 - Assam
163. Congenital Rubella syndrome is most commonly occurring if mother is infected during which period of gestation?
- 1st trimester
 - 2nd trimester
 - 3rd trimester
 - At time of delivery
164. The most common life threatening complication of measles is -
- Persistent diarrhoea
 - Encephalitis
 - Severe respiratory infection
 - Otitis media
165. Regarding influenza pandemics, the true statement is -
- Antigenic drift involves point mutation
 - The most recent avian influenza outbreak was caused by H1N1 strain
 - Most pandemics are caused by influenza B strains
 - Antigenic drift is responsible for pandemics
166. Chikungunya is transmitted by -
- Aedes
 - Culex
 - Mansonoides
 - Anopheles
167. Reduction of premature mortality from Non Communicable diseases is part of which target under Sustainable Development Goals?
- 3.2
 - 3.3
 - 3.4
 - 3.5
168. How many targets are there under Goal 3 of SDG?
- 11
 - 12

- c. 13
d. 14
169. National cancer awareness day is observed on
a. 7th November
b. 1st December
c. 4th April
d. 25th July
170. Under Daily regimen for TB the dose of streptomycin to be given to a 60 kg male patient is?
a. 0.5 gm
b. 0.75 gm
c. 1 gm
d. 1.5 gm
171. BRCA 1 associated breast cancers: pick incorrect
a. Are usually invasive ductal
b. Are poorly differentiated
c. Are usually hormone receptor positive
d. None
172. Pick correctly matched
1. Estrogen : Duct proliferation,
2. Progesterone : Glandular proliferation
3. Prolactin : Milk production
a. 1 and 2
b. 3
c. All
d. None
173. Blood supply of breast is from :
a. From internal mammary artery
b. Lateral thoracic artery from axillary artery
c. Intercoastal artery
d. All of the above
174. Most common renal congenital anomaly is
a. Hypospadias
b. Duplication of ureters
c. Vesico-ureteric reflux
d. Supernumerary renal artery
175. Which of the following organisms does not produce urease
a. Staphylococci
b. H pylori
c. E coli
d. Proteus
176. Most common type of trachea oesophageal fistula is
a. Both upper and lower segment blind
b. Both upper and lower segment of oesophagus communicating with trachea
c. Upper segment is blind. Lower segment communicates with trachea
d. Lower segment is blind. upper segment communicates with trachea
177. GERD management : gold standard surgical procedure is
a. Hill's gastropexy
b. Nissen's fundoplication
c. Toupet partial fundoplication
d. Belsey mark IV operation
178. Classical triad of achalasia does not include
a. Weight loss
b. Regurgitation
c. Dysphagia
d. Halitosis
179. Cystic hygroma : which of the following investigations is not useful in management
a. USG
b. MRI
c. Amniocentesis
d. None
180. Intussusception: most common lead point in children > 1 year of age is
a. Polyp
b. Meckel's diverticulum
c. Peyer's patches
d. Adhesive bands
181. Swenson operation is done for
a. Valvulosis
b. Intussusception
c. Hirschprung's disease
d. Ogilvie syndrome
182. Intestinal obstruction : most of the gas in abdomen of patient originates from
a. Bacterial fermentation of lipids
b. Bacterial fermentation of carbohydrates
c. Swallowed air
d. Diffusion from blood vessels
183. Which of the following is not true regarding magnetic resonance imaging (MRI) for evaluation of breast abnormalities?
a. It is useful for finding the primary breast lesion in patients with positive axillary nodes but no mammographic evidence of a breast tumor.
b. It is more accurate than mammography in establishing the extent of disease in invasive lobular cancer.
c. It is more accurate than mammography in assessing the tumor extent in older women.
d. Its sensitivity in detecting invasive cancer is greater than 90%
184. With regard to breast carcinoma in men, which statement is true?
a. It is detected most commonly in men aged 60 to 70 years.
b. Gynecomastia is a risk factor.
c. It is commonly associated with a mutation in the BRCA1 gene.
d. The prognosis is worse stage for stage than for women.
185. Most common thyroid malignancy occurring in a patient of thyroglossal cyst is


Mock Test – 1

Dec – 2018

- a. Papillary
b. Follicular
c. Medullary
d. Anaplastic
186. Recurrent laryngeal nerve is found in
a. Simon's triangle
b. Joll's triangle
c. Waldeyer triangle
d. None of the above
187. Which of the thyroiditis never has hyperthyroidism as prominent clinical feature
a. Hashimoto
b. De quervain thyroiditis
c. Riedel thyroiditis
d. None of the above
188. Treatment of choice for a symptomatic hemangioma of liver is
a. Enucleation
b. Hepatic resection
c. Liver transplant
d. Mastrely inactivity
189. GHARBI classification useful in patients of hydatid cyst is based on
a. X ray
b. USG
c. CT scan
d. MRI
190. Acute pancreatitis : causes include all except:
a. Trauma
b. ERCP
c. Mumps
d. None of the above
191. Liver is divided into functional right and left lobes by
a. Falsiform ligament
b. Cantlie's line
c. Mid clavicular line
d. Saggital plane
192. Earliest lesion of crohn disease is
a. Aphthous ulcer
b. Caseating granuloma
c. Non caseating granuloma
d. Fat warping
193. Phyllodes tumour : does not involve
a. Skin
b. Nipple areola complex
c. Lymph nodes
d. Lungs
194. Single most important factor predicting burns mortality is
a. Age
b. Hemoglobinuria
c. Urine output
d. Total body surface area burnt
195. Which of the followinh hernia is rarer in females
a. Indirect inguinal hernia
b. Direct inguinal hernia
c. Femoral hernia
d. Incisional hernia
196. Most common type of diaphragmatic hernia is
a. Hiatus hernia
b. Congenital diaphragmatic hernia through foramen of bochdalek
c. Congenital diaphragmatic hernia through foramen of morgagni
d. Traumatic diaphragmatic hernia
197. Appendicitis diagnosis: CECT would be indicated if the alvorado score is
a. 9-10
b. 5-6
c. 1-2
d. None
198. Sutures made up of polygalactic acid is
a. Absocrbable suture
b. Monofilament suture
c. Natural material suture
d. Suitable for external use only
199. Stutures over face should preferable be removed by
a. 1-2 days
b. 3-5 days
c. 6-8 days
d. 10-14 days
200. If a patient has complete bile duct obstruction, which of the following does not occur?
a. Triglyceride absorption
b. Vitamin K absorption
c. Cholesterol synthesis
d. Bilirubin conjugation
201. In which of the following patients with symptomatic cholelithiasis would pigment gallstones be expected?
a. A 45-year-old (y/o) male with a body mass index (BMI) of 49
b. A 27-y/o female status post ileal resection
c. A-38 y/o female with rapid weight loss after a sleeve gastrectomy
d. A 65-y/o female on estrogen therapy
202. All are true about cochlea except
a. Main organ of hearing
b. Having 2.75 turn around modiolus
c. Is a part of bony labyrinth
d. High frequency sound localized at Apex of cochlea
203. Nerve supply to tympanic membrane by
a. Jacobson's nerve
b. Arnold's nerve
c. Vidian nerve
d. All of the above
204. Vertigo or Dizziness due to disorders of
a. Vestibular system

- b. Visual system
c. Somatosensory system
d. All of the above
205. A 29 year old female from Tihar jail came to ENT OPD with complain of progressive hearing loss, her co-inmates says that she is not able to hear during normal conversation but she hears all the voices during quarrelling in the jail. The patients also gave similar history about her mother. What is the probable diagnosis?
a. Acoustic neuroma
b. Malingering
c. Otosclerosis
d. Wax
206. All of the following are true about Sensorineural hearing loss except
a. AC > BC
b. Weber lateralized to disease ear
c. Difficulty in hearing in presence of voice
d. None
207. All are true about perichondritis except
a. It is secondary to haematoma
b. Most common organism is Staph. Aureus
c. Treatment of choice is Incision & drainage
d. Antibiotics can be given
208. A 8 years young boy suffering from hearing loss and also having delayed and defective speech. Tuning fork test shows bone conduction better than air conduction and on otoscopy, Tympanic membrane having retraction and there was separate air - fluid level in middle ear. Then what is the finding on Impedance audiometry
a. Type A curve
b. Type B curve
c. Type C curve
d. Type Ad curve
209. All of the following are a traid of petrositis except
a. Sensorineural hearing loss
b. Lateral (External) rectus palsy
c. Retro-orbital pain
d. Persistent ear discharge
210. Most common cause of facial nerve palsy is
a. Viruses
b. Trauma
c. Idiopathic
d. Neoplasm
211. All of the following are true about submucous fibrosis except
a. More in high socioeconomic status
b. More commom in south-east Asia
c. Multifactorial in nature
d. Premalignant condition
212. All of the following are absolute indication of tonsillectomy except
a. Recurrent infection of tonsils
b. Quinsy
c. Diphtheria
d. Malignancy of tonsil
213. All of the following are true about laryngeal carcinoma except
a. Most common is squamous cell carcinoma
b. Previous radiation is a risk factor for this
c. Alcohol & smoking increases the risk by 15 fold
d. Mostly seen in age group less than 40 years of age
214. A 30 yrs old woman para 6 delivers vaginally following normal labour with spontaneous delivery of an intact placenta. Excessive bleeding continues, despite manual exploration, bimanual massage, intravenous oxytocin and administration of 0.2mg methergin IV, which one of the following would be the next step in the management of this patient?
a. Packing of uterus
b. Immediate hysterectomy
c. Bilateral internal iliac ligation
d. Injection of PGF 2 α
215. Most common congenital anomaly associated with face presentation is:
a. Anencephaly
b. Hydramnios
c. Microcephaly
d. Hydrocephalus
216. A 25 years old female reports in the casualty with history of amenorrhoea for two and half months and abdominal pain and bleeding per vaginum for one day. On examination, vital parameters and other systems are normal. On speculum examination, bleeding is found to come from Os. On bimanual examination, uterus is of 10 weeks size, soft and os admits on finger. The most likely diagnosis is:
a. Threatened abortion
b. Missed abortion
c. Inevitable abortion
d. Incomplete abortion
217. All of the following methods are used for MTP in 2nd trimester except:
a. Intra-amniotic saline
b. Prostaglandins
c. Hysterotomy
d. Menstrual regulation
218. A diabetic pregnant woman have mild uterine contractions at 29 weeks of gestation you want to subside these uterine contractions DOC for tocolysis in this patient is:
a. Ritodrine
b. MgSO₄
c. Nifedipine
d. Terbutaline

219. Immediately following delivery the height of the uterus corresponds to ____ weeks:
- 32
 - 20
 - 25
 - 12
220. The uterus becomes pelvic organ after delivery in:
- 10 to 12 days
 - 12 to 14 days
 - 14 to 16 days
 - 16 to 18 days
221. An elderly multiparous woman with intrauterine foetal death was admitted with strong labour pains. The patient suddenly goes in shock with cyanosis respiratory disturbances and pulmonary oedema. The most likely clinical diagnosis is:
- Rupture of uterus
 - Congestive heart failure
 - Amniotic fluid embolism
 - Concealed accidental haemorrhage
222. 30 years old female comes with obstructed labour and is febrile and dehydrated with IUD and cephalic presentation. Which is the best way to manage?
- Craniotomy
 - Decapitation
 - Caesarean section
 - Forceps extraction
223. Most common heart disease associated with pregnancy is:
- Mitral stenosis
 - Mitral regurgitation
 - Patent ductus arteriosus
 - Tetralogy of fallot's
224. MC cause of hypomenorrhoea is
- PCOD
 - Ashermann syndrome
 - Fibroid
 - DUB
225. IOC for adenomyosis is
- Laparoscopy
 - USG
 - Hysteroscopy
 - X ray
226. Cervicopexy is done for
- Prolapse in nulliparous
 - Fistula in nulliparous
 - Ectopic pregnancy
 - Ca cervix
227. Cut off level of endometrial thickness in postmenopausal female in mm is
- 2
 - 4
 - 8
 - 7
228. Most common extranodal site for Non-Hodgkins Lymphoma:
- Stomach
 - Brain
 - Intestine
 - Tonsil
229. Largest hematopoietic cell found in a normal bone marrow aspirate is:
- Osteoblast
 - Myeloblast
 - Pronormoblast
 - Megakaryocyte
230. 25 years old female patient complains that she is always tired and cannot concentrate. On peripheral blood smear there is microcytic hypochromic picture. This is suggestive of:
- Iron deficiency anemia
 - Vitamin B12 deficiency
 - Folic acid deficiency
 - Any of the above
231. Live attenuated vaccine from Oka strain is used for protection against:
- Varicella
 - Mumps
 - Measles
 - Rubella
232. If Vagina is involved in endometrial carcinoma, stage is
- I B
 - II B
 - III B
 - IV B
233. Water hammer pulse is seen in:
- Aortic stenosis
 - Aortic regurgitation
 - Aortic stenosis and aortic regurgitation
 - Mitral regurgitation
234. Which of the following murmurs increase with Valsalvamanuever:
- MR
 - VSD
 - AS
 - HOCM
235. All of the following are the electrocardiographic features of hyperkalemia, except:
- Prolonged PR interval
 - Prolonged QRS interval
 - Sine wave patterns
 - Loss of P wave
236. Female external genitalia are formed due to
- Testosterone
 - Dihydrotestosterone
 - Absence of testosterone
 - Absence of DHT
237. Rectovaginal fistula may be caused by

- a. CS
b. Simple hysterectomy
c. Endometriosis of urinary bladder
d. OP position
238. MC symptom of lateral wall cervical fibroid is
a. Dysuria
b. Retention of urine
c. Edema and haemorrhoids
d. Menorrhagia
239. Hysteroscopy can be useful for all except
a. Detection of septate uterus
b. Removal of submucous fibroid
c. Treatment of ashermann syndrome
d. Endometriosis
240. Progesterone can be used to treat all except
a. LPD
b. Shroeders disease
c. Endometriosis
d. Halban disease
241. A 15 yr old girl comes with cyclical pain and primary amenorrhoea. Which is most likely
a. Stein leventhal syndrome
b. Ashermann syndrome
c. Imperforate hymen
d. Sheehan syndrome
242. A 63 yr old obese nulliparous lady comes with irregular bleeding P/V. What is most likely
a. Carcinoma cervix
b. Adenomyosis
c. Carcinoma endometrium
d. Vesicovaginal fistula
243. 16 year old female patient was having decreased platelet count and prolonged prothrombin time and partial thromboplastin time. This is suggestive of acute myeloid leukemia type:
a. M2
b. M3
c. M4
d. M7
244. True Statements regarding Direct Ophthalmoscopy are NE:
a. 2 disc diameter field of vision
b. Image is virtual and erect
c. Magnification is 5 times
d. Self illuminated device
245. All of the following are predictive tests for PIH except:
a. Rolling over test
b. Serum uric acid
c. Gain in weight > 2 kg in one month
d. Shake test
246. Synchondroses and symphysis are types of
a. Cartilaginous joints
b. Hinge
c. Pivot joint
d. None of the above
247. Which of the following tumors arise from epiphysis
a. Ewing's sarcoma
b. Osteoclastoma (GCT)
c. Chondromyxoid fibroma
d. Osteosarcoma
248. Osteogenesis imperfecta: most common inheritance pattern is
a. Autosomal dominant
b. Autosomal recessive
c. X linked dominant
d. X linked recessive
249. Chalazion is a chronic inflammatory granuloma of:
a. Meibomian gland
b. Zeis's gland
c. Sweat gland
d. Wolfring's gland
250. In vernal catarrh, the characteristic cells are:
a. Macrophage
b. Eosinophils
c. Neutrophils
d. Epitheloid cells
251. 3rd nerve palsy in diabetes mellitus characteristically shows?
a. Absent light reflex, accommodation is present
b. Intact light reflex, accommodation is absent
c. Both light and accommodation reflex is absent
d. Both are normal
252. 100 day glaucoma is seen in?
a. Central retinal vein occlusion(CRVO)
b. Central retinal artery occlusion(CRAO)
c. Diabetic retinopathy
d. After injury
253. What is the most serious cause of conjunctivitis that cause blindness in children:
a. N. gonococcus
b. Streptococcus
c. Staphylococcus
d. Chlamydia
254. Commonest CNS tumour responsible for primary amenorrhea is:
a. Craniopharyngioma
b. Medulloblastoma
c. Astrocytoma
d. Glioblastoma
255. Following symbol  in pedigree chart represent:
a. Proband
b. Consultand
c. Stillbirth
d. Miscarriage

256. Karyotype of a male child with Edwards syndrome is:
- 47XY + 18
 - 47 XY + 13
 - 47 XY +21
 - 47 XY (t14 : 21)
257. Oedema of hands & feet at birth is seen in genetic syndrome:
- Turner's syndrome
 - Klinefelter's syndrome
 - Patau syndrome
 - Edwards syndrome
258. In a Down syndrome child blood test to be done on periodic follow up is:
- Blood urea nitrogen & complete blood count
 - Complete blood count & thyroid function test
 - Complete blood count & serum uric acid
 - Thyroid function test & blood sugar level
259. 3 year old infant presented with failure to thrive, recurrent diarrhea and pain abdomen. His tTG ELISA for both IgA and IgG was positive:
- Celiac disease
 - Abetalipoproteinemia
 - Giardiasis
 - Amoebiasis
260. Primigravida mother with history of fever with vesicopustular rash during second trimester of pregnancy gives birth to a IUGR baby having cicatricial skin lesions and hypoplasia of certain fingers and toes. Most likely diagnosis:
- Congenital herpes
 - Congenital rubella
 - Congenital varicella
 - Cytomegalic inclusion disease
261. Gower's sign is positive in the following:
- Duchenne muscular dystrophy
 - Limb girdle dystrophy
 - Becker muscular dystrophy
 - All of the above
262. True about juvenile myoclonic epilepsy is:
- Only occurs in boys
 - Responds very well to carbamazepine
 - Is not associated with generalized tonic / clonic seizures
 - EEG is characterized by poly spike & waves
263. All are characteristic features of tuberous sclerosis except:
- Shagreen patch
 - Ash-leaf patch
 - Axillary freckling
 - Tramline appearance on skull X-ray
264. 2 year old child was brought to the OPD by his parent with complaints of not eating anything. His weight is 11.5kg (50th percentile of normal) and height (75th percentile). Normal management is:
- Advise multivitamin tonic
 - Force to eat
 - Investigate for infection
 - Ask parents to stop worrying
265. One year old child can perform:
- Sits down from standing position
 - Drinks from cup
 - Speaks one or two words with meaning
 - Rings bell purposefully
266. Following childhood disorder improves with increase in age:
- Conduct disorder
 - Emotional problems
 - Temper tantrum
 - Sleep disorder
267. All of the following neonatal reflexes are present at birth in a term child except:
- Placing and stepping reflex
 - Moro's reflex
 - Asymmetrical tonic neck reflex
 - Symmetrical tonic neck reflex
268. Prerenal and Renal azotemia is differentiated on the basis of:
- Creatinine clearance
 - Serum creatinine level
 - Sodium fraction excretion
 - Urine bicarbonate level
269. Non Oliguric Acute Renal Failure is typically associated with:
- Aminoglycoside toxicity
 - Contrast induced nephrotoxicity
 - Haemolytic Uremic syndrome
 - Glomerulonephritis
270. Which of the following pairs regarding Hepatitis B is not correctly matched:
- Acute viral Hepatitis B – Supportive care
 - Acute viral Hepatitis B – Antiviral Therapy
 - Chronic Hepatitis B – Supportive care
 - Chronic Hepatitis B – Antiviral Therapy
271. A 55 years old male patient was diagnosed to have chronic hepatitis C. he responded to treatment with interferon. However, after one year of follow-up he showed a relapse of disease. Which of the following would be the next most appropriate choice:
- Ribavirin and interferon
 - Lamivudine and interferon
 - Nevirapine and Lamivudine
 - Indinavir and ribavirin
272. Feature of Hepatorenal syndrome are:
- Urine sodium < 10 meq/l
 - Normal renal histology
 - Renal function abnormal even after liver become normal
 - Proteinuria < 500mg/day

Mock Test – 1

Dec – 2018

273. Portal hypertension presenting with intractable ascitis and hepatomegaly is likely to be due to:
- Portal vein thrombosis
 - Budd-chiari syndrome
 - Alcoholic cirrhosis
 - Biliary cirrhosis
274. The association between exposure to television viewing and mental acuity in children was studied and the following information was recorded for each child in the study: Religion (Hindu or any other religion), age (in years), and amount of exposure to TV viewing (rated from 0 for no exposure to 3 for more than three years' exposure to TV viewing). Which of the following choices lists these variables in the order of: dichotomous nominal, ordinal, and continuous?
- Amount of exposure, religion, age
 - Age, religion, amount of exposure
 - Religion, age, amount of exposure
 - Religion, amount of exposure, age
275. Which is not a measure of Dispersion –
- Range
 - Mode
 - Variance
 - Interquartile range
276. The Hb level in healthy women has mean 13.5 g/dl and standard deviation 1.5 g/dl, what is the Z score for a woman with Hb level 15 g/dl –
- 9
 - 10
 - 2
 - 1
277. Which of the following is the most common acid-base disturbance in patients with cirrhosis and portal hypertension?
- Metabolic acidosis.
 - Respiratory alkalosis.
 - Metabolic alkalosis.
 - Respiratory acidosis.
278. Assays of which of the following biomarkers is most commonly used in the diagnosis of heart failure:
- Brain Natriuretic Peptide (BNP)
 - Atrial Natriuretic Peptide (ANP)
 - Endothelin – 1 (ET-1)
 - Endothelin – 2 (ET-2)
279. Which of the following valvular heart diseases is most commonly associated with sudden death:
- Aortic stenosis
 - Mitral stenosis
 - Mitral regurgitation
 - Aortic regurgitation
280. Beck's triad is:
- Increased heart sound, distended neck veins, hypotension
 - Increased heart sound, distended neck veins, hypertension
 - Muffled heart sound, distended neck veins, hypotension
 - Muffled heart sound, distended neck veins, hypertension
281. A patient with a prosthetic heart valve develops endocarditis eight months after valve replacement. Most likely organism responsible is:
- Staphylococcus Aureus
 - Staphylococcus Epidermidis
 - Streptococcus Viridans
 - HACEK group
282. About systemic inflammatory response syndrome (SIRS) all are true except?
- Leukopenia
 - Hyperthermia
 - Hypoxia
 - Tachycardia
283. If FEV1 is 1.3 litres and FVC is 3.1 litres in an adult man, the pattern is suggestive of?
- Normal lung function
 - Restrictive lung disease
 - Obstructive lung disease
 - None of the above
284. The abnormal preoperative pulmonary function test in a patient with severe kyphoscoliosis includes:
- Reduced RV/TLC
 - Reduced FEV1/FVC
 - Reduced FEV25-75
 - Increased FRC
285. All are the following are potential causes of hyperprolactinemia except:
- Cirrhosis
 - Hirsutism
 - Nipple stimulation
 - Opiate abuse
286. Which of the following studies is the most sensitive for detecting diabetic nephropathy?
- Creatinine clearance
 - Glucose tolerance test
 - Serum creatinine level
 - Urine albumin
287. A 54 year old woman presents to the emergency department complaining of the abrupt onset of what she describes as the worst headache of her life. You are concerned about the possibility of subarachnoid haemorrhage. What is the most appropriate initial test for diagnosis?
- Cerebral angiography
 - CT of the head with IV contrast
 - CT of the head without IV contrast
 - Lumbar puncture
288. A 72 year old woman presents with recurrent episodes of incapacitating facial pain lasting from

Mock Test – 1

Dec – 2018

- second to minutes and then dissipating. The episodes occurs usually twice per day, usually without warning, but are also occasionally provoked by brushing of her teeth. On physical examination, she appears well with normal vital signs. Detailed cranial nerve examination reveals no sensory or motor abnormalities. The remainder of her neurologic examination is normal. What is the next step in her management?
- Brain MRI
 - Brain MRI plus carbamazepine therapy
 - Carbamazepine therapy
 - Glucocorticoid therapy
289. Lumbar puncture should be preceded by CT or MRI in all of the following subsets of patient suspected of having meningitis except those with:
- Depressed consciousness
 - Focal neurologic abnormality
 - Positive Kerning's sign
 - Recent head trauma
290. Which of the following test is useful to distinguish between insulinoma and sulfonylurea related hypoglycaemia?
- Antibody to insulin
 - Plasma – C peptide level
 - Plasma insulin level
 - Insulin – Glucose ratio
291. Developmental dysplasia of hip is commonly associated with all of the following except:
- Meningocele
 - 1st born male child
 - Breach position
 - Twin pregnancy
292. The Atlantoaxial joint is a type of:
- Ball and socket
 - Hinge
 - Pivot
 - Ellipsoid joint
293. Maximum amount of AF occurs at:
- 32 weeks of gestation
 - 38 weeks of gestation
 - At term
 - 34 weeks of gestation
294. A placenta, which has a depression in centre on chorionic plate, which is surrounded by a greyish white ring, is called as:
- Extra chorial placenta
 - Circumvallate placenta
 - Marginate placenta
 - Battledore placenta
295. In normal puerperium, all true regarding involution of uterus except:
- At the end of the 6 weeks, becomes non pregnant state
 - The number of muscle fibres is not decreased but there is substantial reduction of the myometrial cell size
 - At the end of the 4th week uterus becomes a pelvic organ
 - Weight of uterus about 60 gram at end of six weeks
296. The cause of 'postpartum blues' is:
- Decreased estrogen
 - Decreased progesterone
 - Increased prolactin
 - Decreased estrogen and progesterone
297. Ptosis in Homer's syndrome, is due to paralysis of:
- Riolan's muscle
 - Honer's muscle
 - Muller's muscle
 - The levator palpebral muscle
298. All of the following organisms can invade an intact corneal epithelium except:
- Neisseria meningitidis
 - Corynebacterium diphtheriae
 - Shigella
 - Pseudomonas aeruginosa
299. Bitemporal hemianopia is a characteristic feature of?
- Glaucoma
 - Optic neuritis
 - Pituitary tumour
 - Retinitis pigmentosa
300. Diplopia in superior oblique palsy is?
- Vertical diplopia on downward gaze
 - Vertical diplopia on upward gaze
 - Horizontal diplopia on inward gaze
 - Horizontal diplopia on outward gaze

Best of luck!

Team Motivation FMGE Coaching Academy

114/Basement, Sudarshan Apartment,

Gautam Nagar, New Delhi – 110049

Contact – 9999734551, 01141013256

Web – www.teammotivation.com,

Email – teammotivationindia@gmail.com

Team Motivation FMGE Coaching Academy

Mock Test – 1

Dec – 2018

1. D	52. A	103. B	154. A	205. C	256. A
2. A	53. D	104. B	155. B	206. B	257. A
3. B	54. C	105. A	156. C	207. B	258. B
4. B	55. B	106. D	157. B	208. B	259. A
5. B	56. D	107. D	158. B	209. A	260. C
6. D	57. A	108. A	159. A	210. C	261. D
7. C	58. C	109. A	160. D	211. A	262. D
8. D	59. D	110. A	161. B	212. C	263. D
9. A	60. C	111. C	162. D	213. D	264. D
10. B	61. A	112. A	163. A	214. D	265. C
11. A	62. A	113. C	164. C	215. A	266. C
12. A	63. B	114. C	165. A	216. C	267. D
13. D	64. B	115. D	166. A	217. D	268. C
14. C	65. D	116. A	167. C	218. B	269. A
15. D	66. D	117. D	168. C	219. B	270. B
16. A	67. D	118. A	169. C	220. A	271. A
17. A	68. D	119. A	170. C	221. C	272. C
18. D	69. A	120. B	171. C	222. D	273. B
19. D	70. B	121. C	172. C	223. A	274. D
20. C	71. D	122. C	173. D	224. B	275. B
21. A	72. C	123. C	174. C	225. C	276. D
22. B	73. C	124. B	175. C	226. A	277. B
23. D	74. D	125. C	176. C	227. B	278. A
24. B	75. D	126. C	177. B	228. A	279. A
25. D	76. D	127. A	178. D	229. D	280. C
26. B	77. A	128. D	179. D	230. A	281. B
27. C	78. D	129. D	180. B	231. A	282. C
28. A	79. D	130. C	181. C	232. C	283. C
29. D	80. A	131. C	182. C	233. B	284. D
30. A	81. A	132. D	183. C	234. D	285. B
31. B	82. C	133. A	184. A	235. B	286. D
32. B	83. A	134. B	185. A	236. D	287. C
33. B	84. C	135. B	186. A	237. D	288. C
34. D	85. D	136. D	187. C	238. C	289. C
35. B	86. B	137. C	188. A	239. D	290. B
36. B	87. B	138. C	189. B	240. D	291. C
37. C	88. B	139. B	190. D	241. C	292. C
38. C	89. B	140. B	191. B	242. C	293. B
39. B	90. C	141. C	192. A	243. B	294. B
40. C	91. C	142. D	193. C	244. C	295. C
41. C	92. C	143. C	194. D	245. D	296. D
42. A	93. A	144. D	195. B	246. B	297. C
43. C	94. A	145. D	196. A	247. B	298. D
44. D	95. A	146. A	197. B	248. A	299. C
45. B	96. A	147. B	198. A	249. A	300. A
46. B	97. B	148. A	199. B	250. B	
47. B	98. A	149. B	200. B	251. D	
48. B	99. B	150. C	201. B	252. A	
49. C	100. A	151. D	202. D	253. A	
50. C	101. B	152. C	203. A	254. A	
51. D	102. D	153. A	204. D	255. D	